

COLLECTION
2020-21



 **SAI PVC DECOR PVT LTD.**
NEW TOWN SQUARE, UNIT 3A, ATGHORA
RAJARHAT, NEAR CHINAPARK CROSSING
KOLKATA - 700 136
Whatsapp: +91 - 8830278562
Website: www.saipvcdecor.com
✉ info@saipvcdecor.com



CHANNEL PARTNER :



UNLIMITED
DESIGNS
FOR
UNLIMITED
DREAMS

FOLLOW US ON:



UNLIMITED
DESIGNS
FOR
UNLIMITED
DREAMS

COLLECTION 2020-21



COLOR CORE
PVC LAMINATES . . .

AFFORDABLY
— YOURS



UNLIMITED DESIGNS FOR UNLIMITED DREAMS

Mistika Decor Pvc Decorative Laminates Has Set A Quality Benchmark In The Interior Designing Industry. We Offer Some Of The Finest Grade Compact And Durable Laminates. Our Laminates Are Resilient And Flexible Products With Unlimited Potential In Interior Designing. They Share An Invisible Background. We Strive To Not Only Reinvent The Way Laminates Are Seen, But Also How They Appear. Using Vibrant Shades And Finishes, We Endeavour To Give Laminates A Complete Makeover. We Envision Laminates Not Just As An Economical Counter-top, But Also An Unparalleled Design Element That Adds Character To Décor.



Style your interiors with
the touch of Mistika Decor



AUTHENTICITY



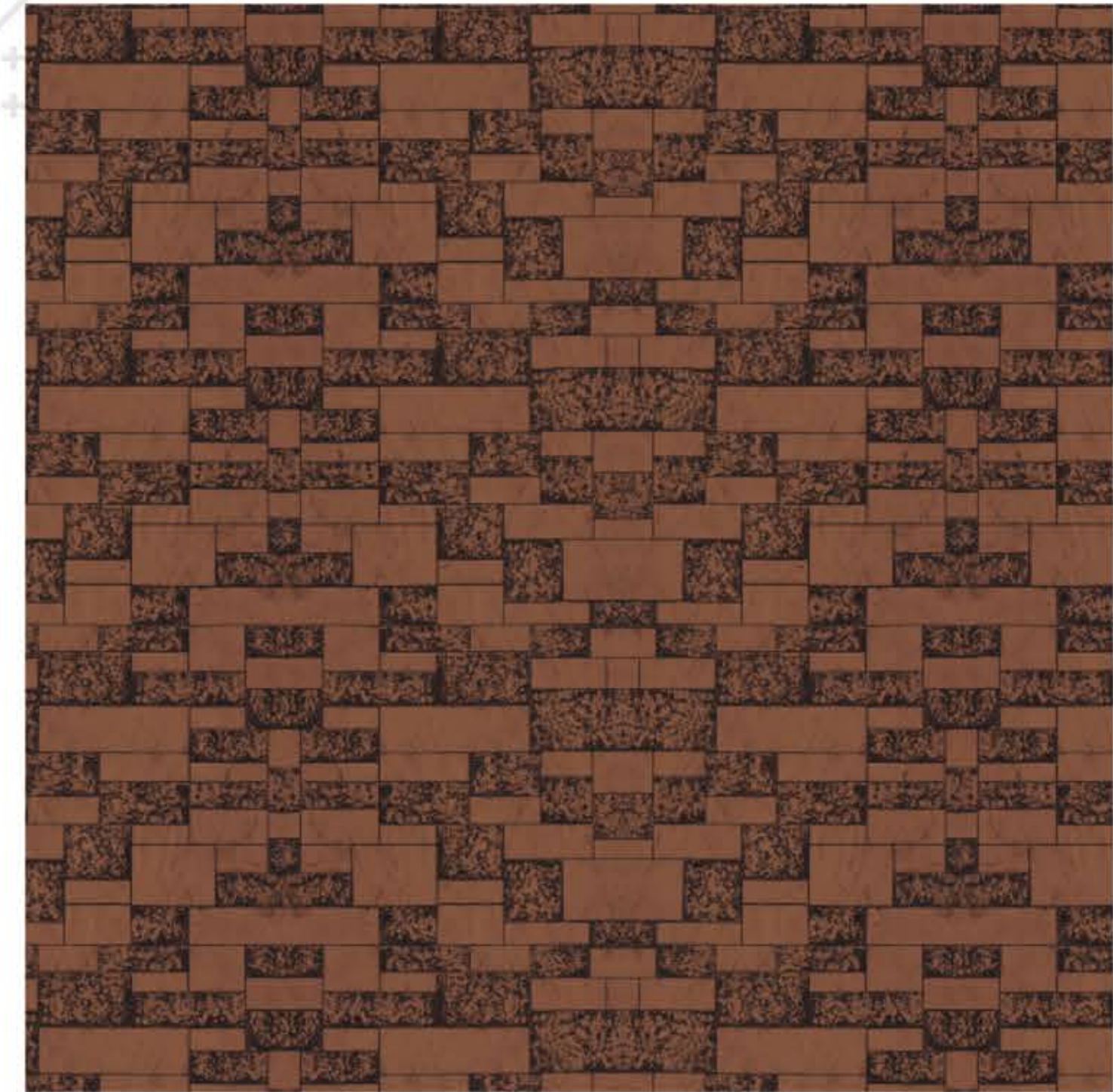
UNLIMITED
DESIGNS
FOR
UNLIMITED
DREAMS

LOADING
QUALITIES



Sensitises
the spaces

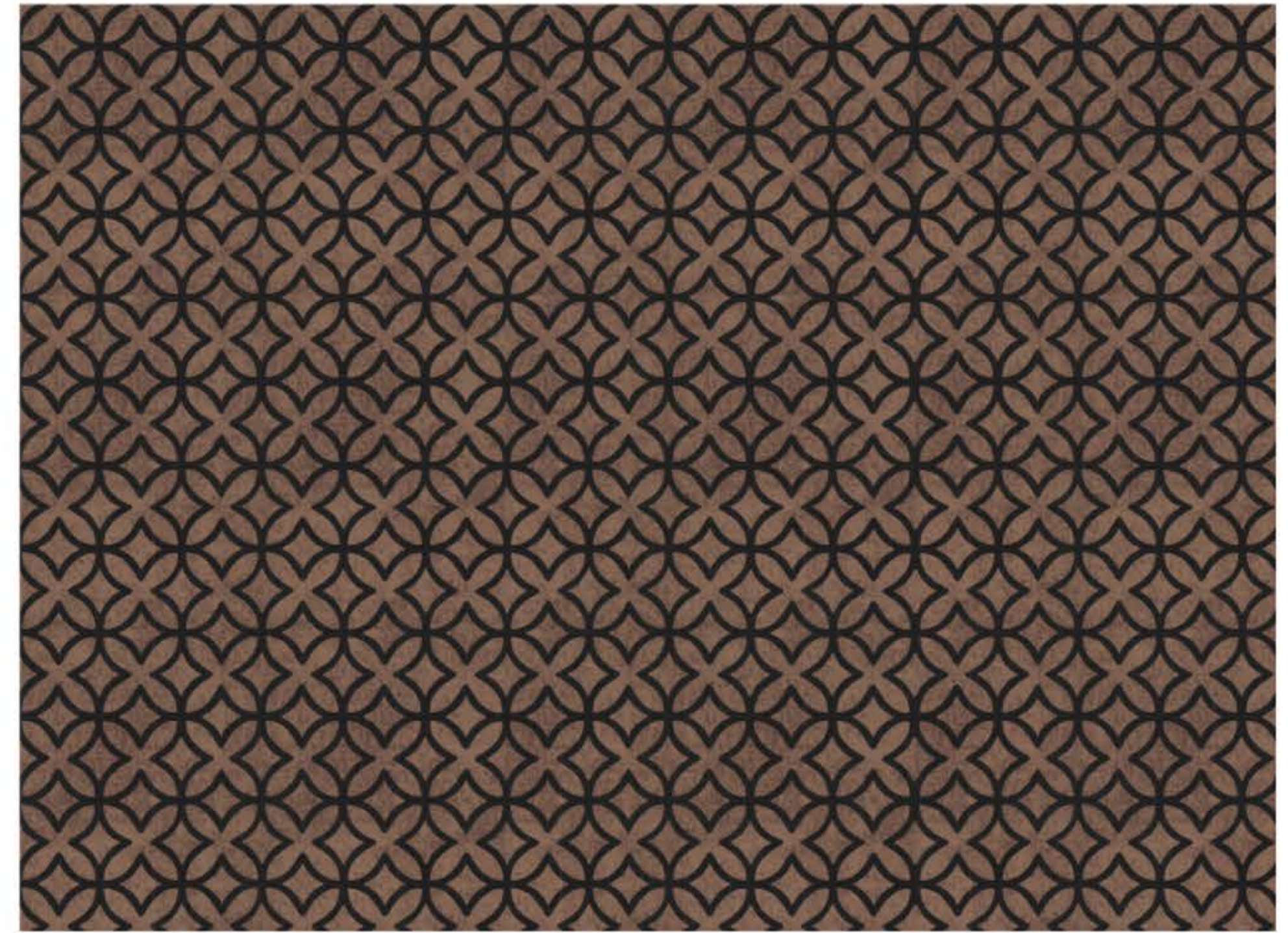




MD 807



MD 808



MD 802



MD 801

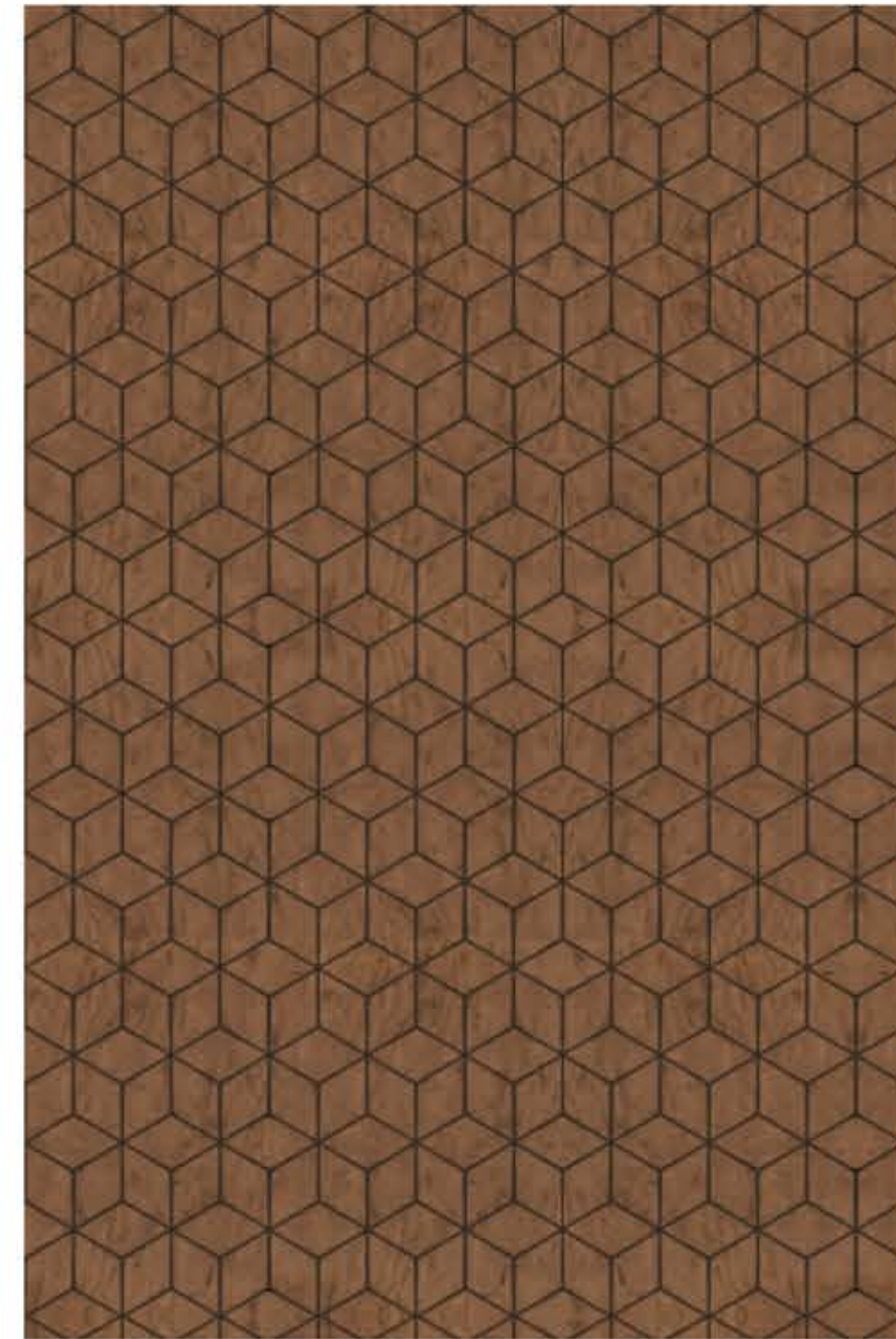




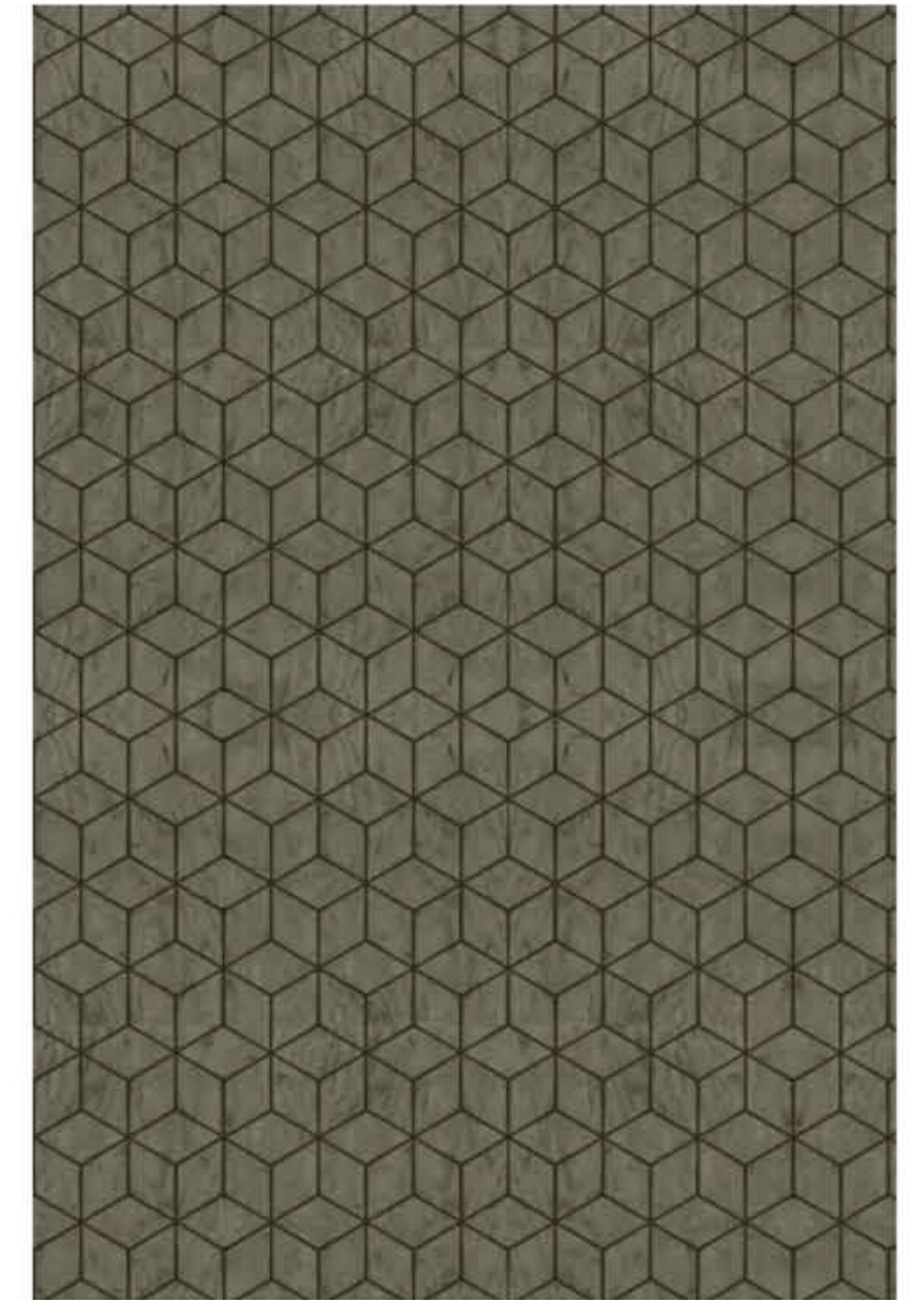
MD 805



MD 806



MD 803



MD 804





MD 408

MD 405



MD 402

MD 401

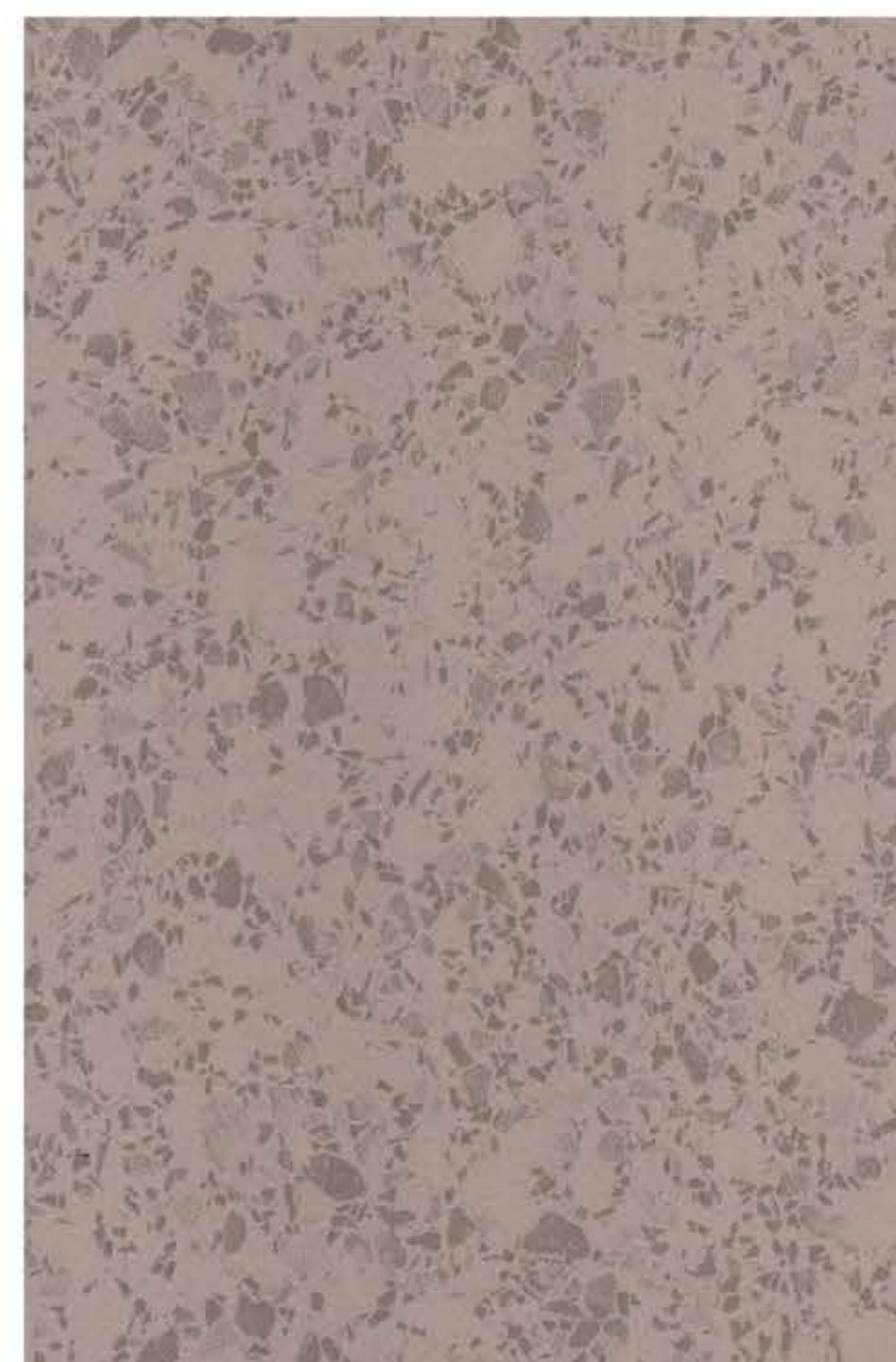


MD 403

MD 406



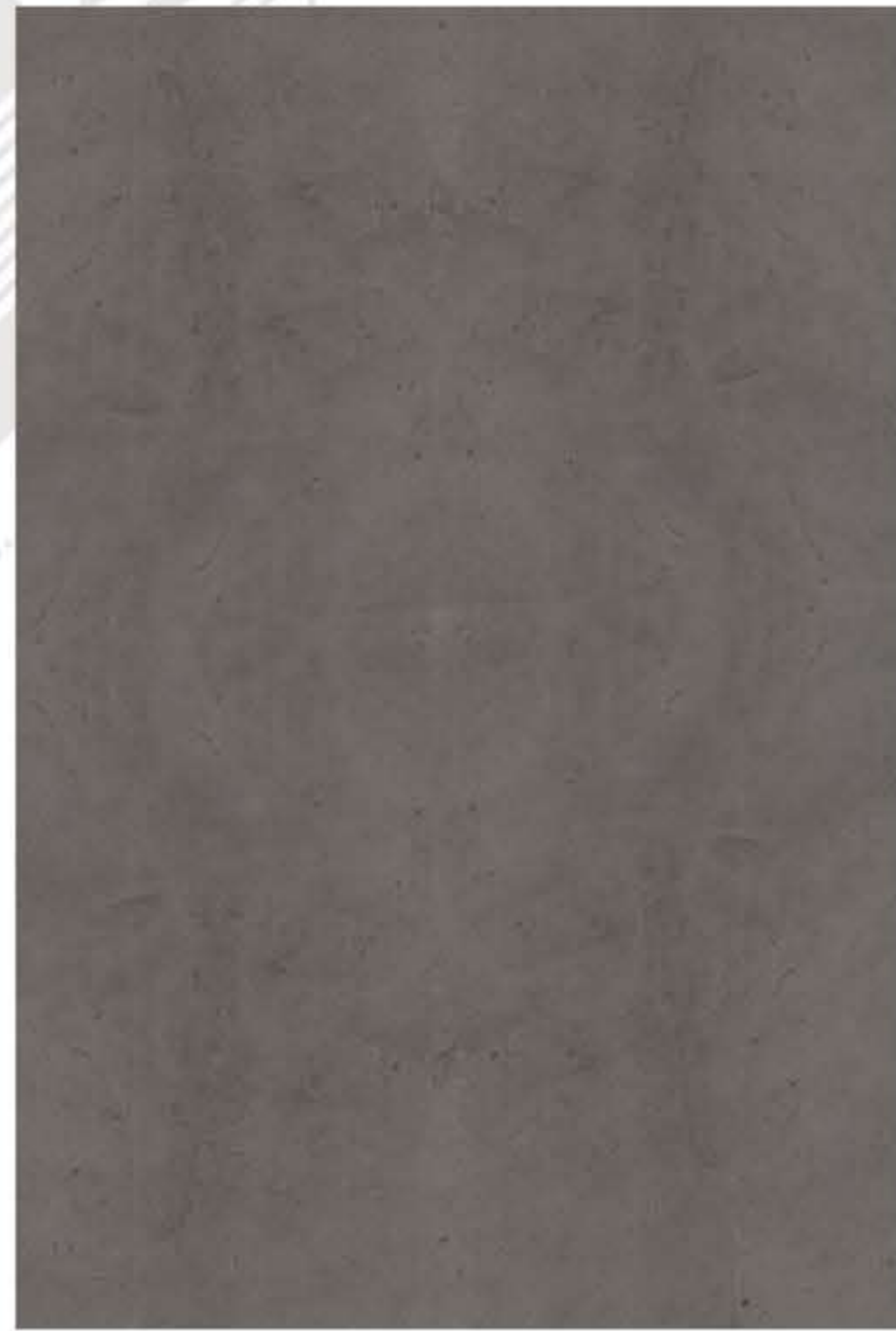
MD 430



MD 431



MD 432



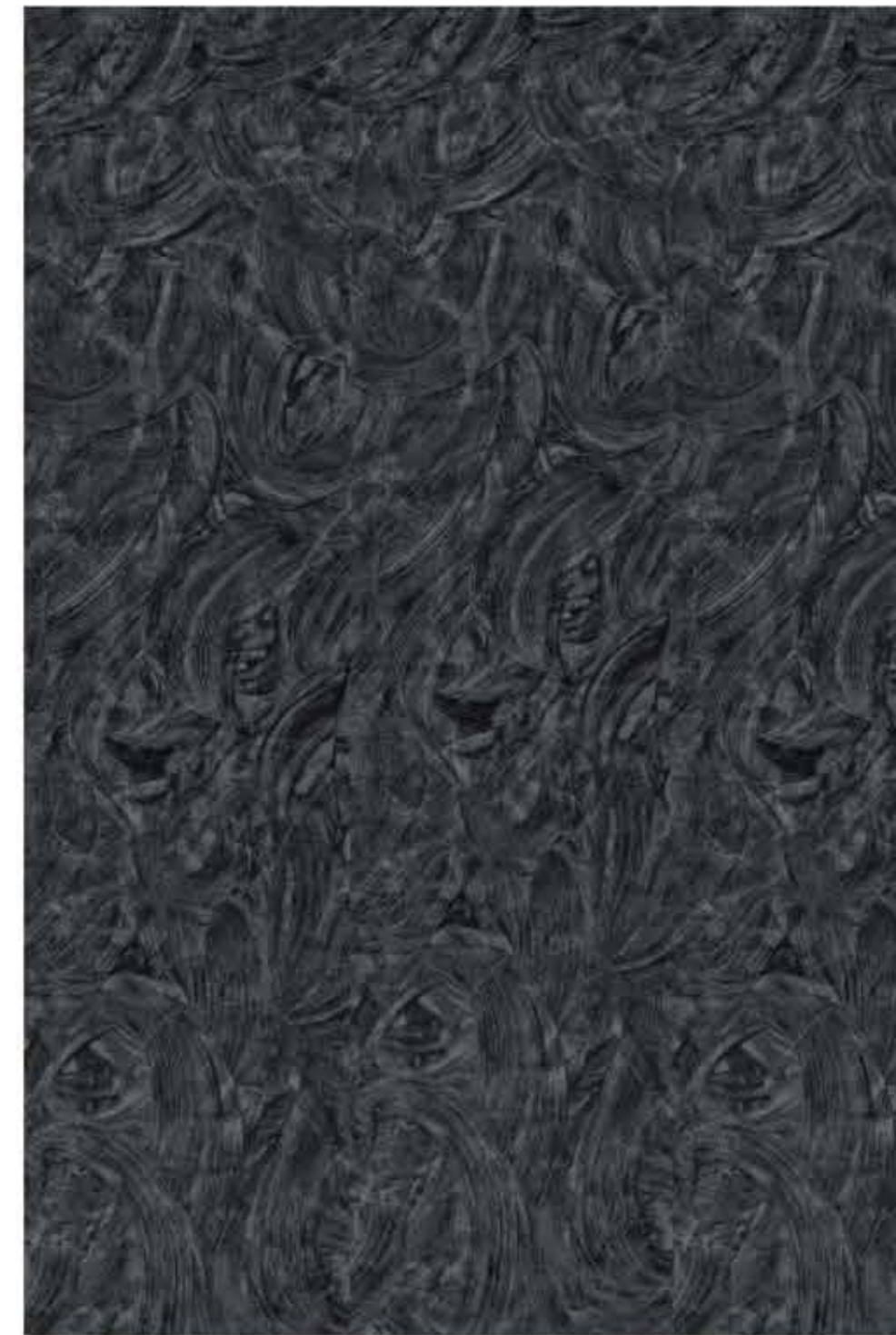
MD 404



MD 407

FABRIC COLLECTION





MD 605



MD 606



MD 604





MD 612



MD 611



MD 613



MD 614





MD 621



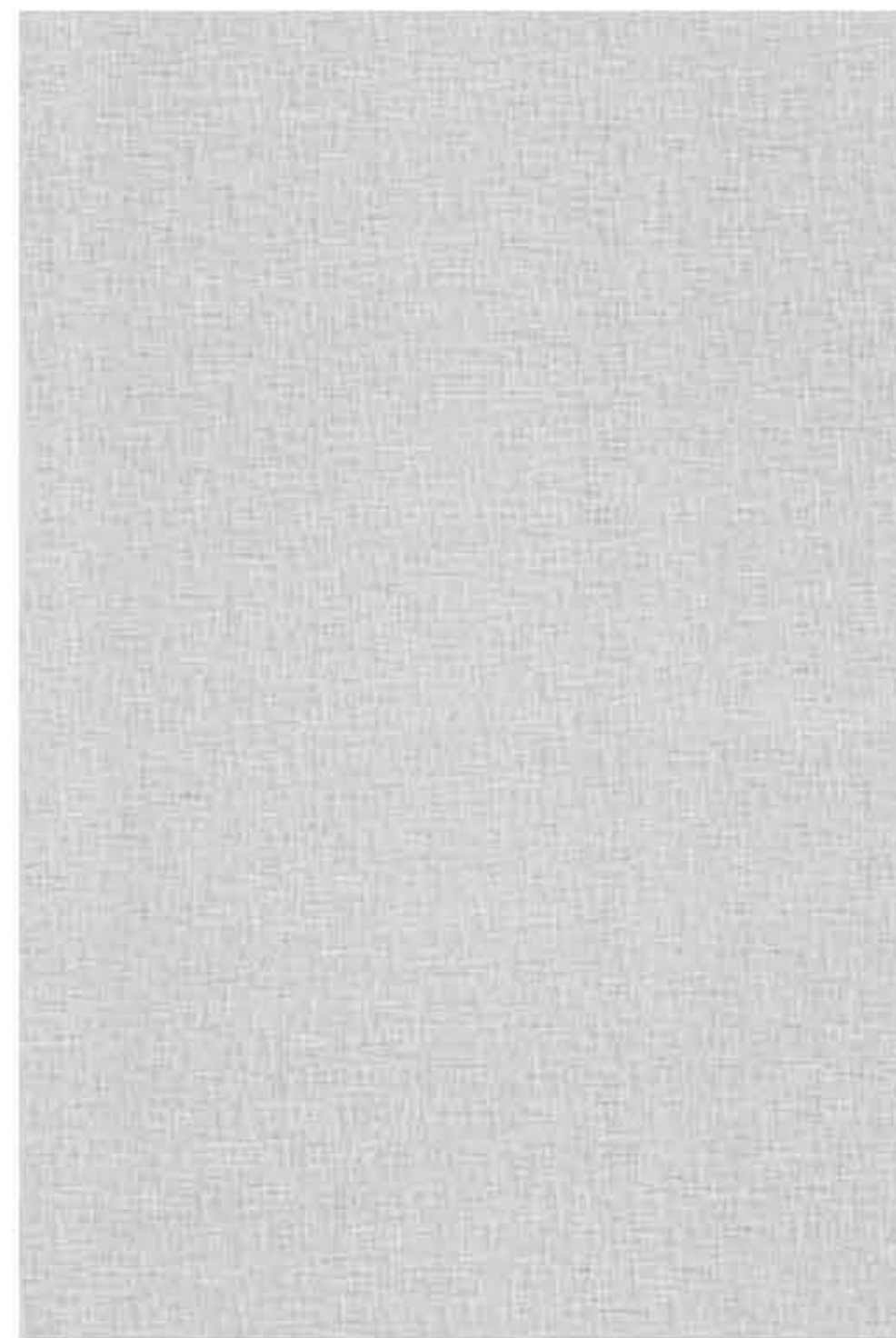
MD 622



MD 608



MD 610



MD 609



MD 607



MD 627



MD 628



MD 615



MD 616



MD 617



MD 618



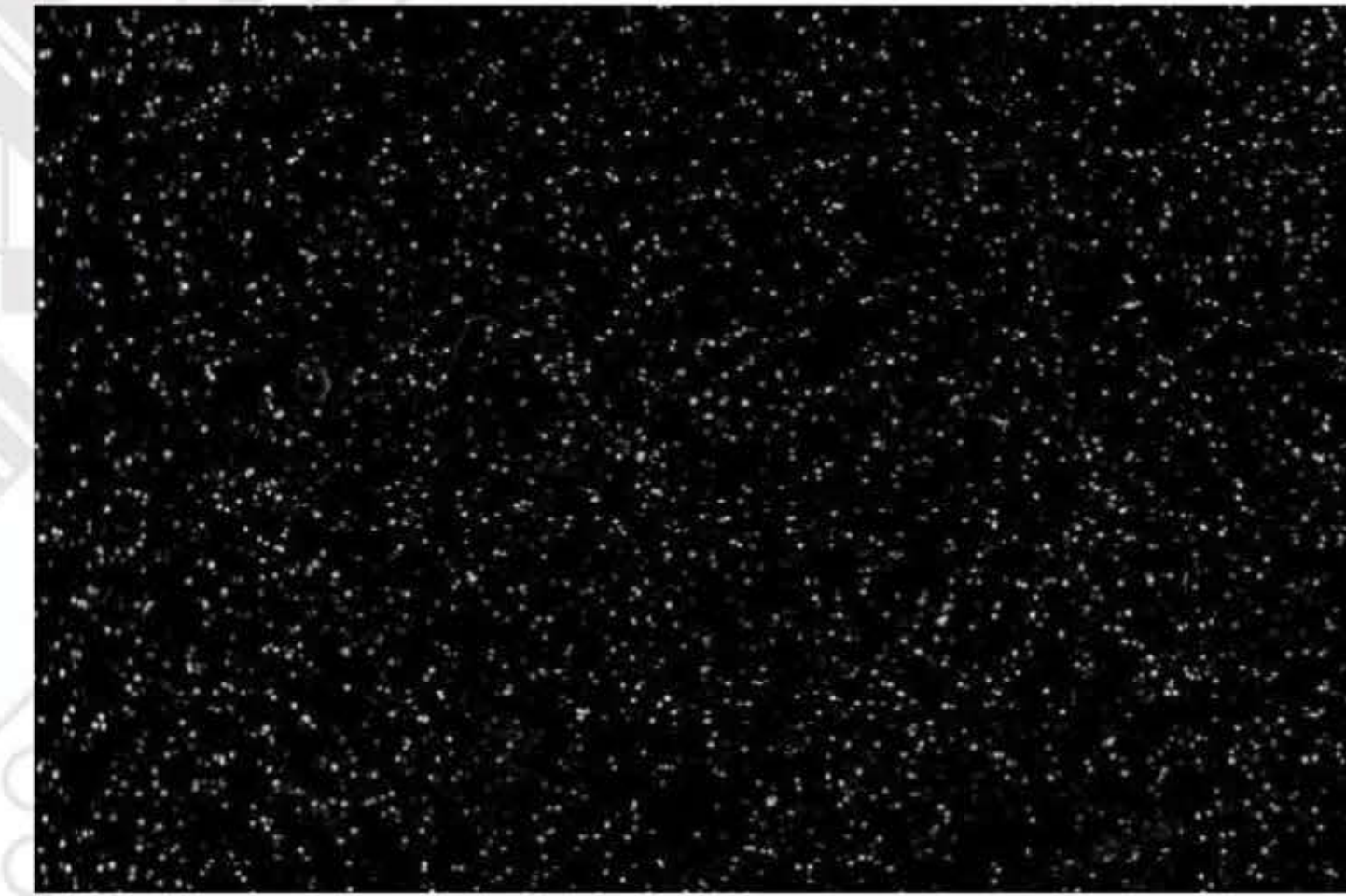
MD 619



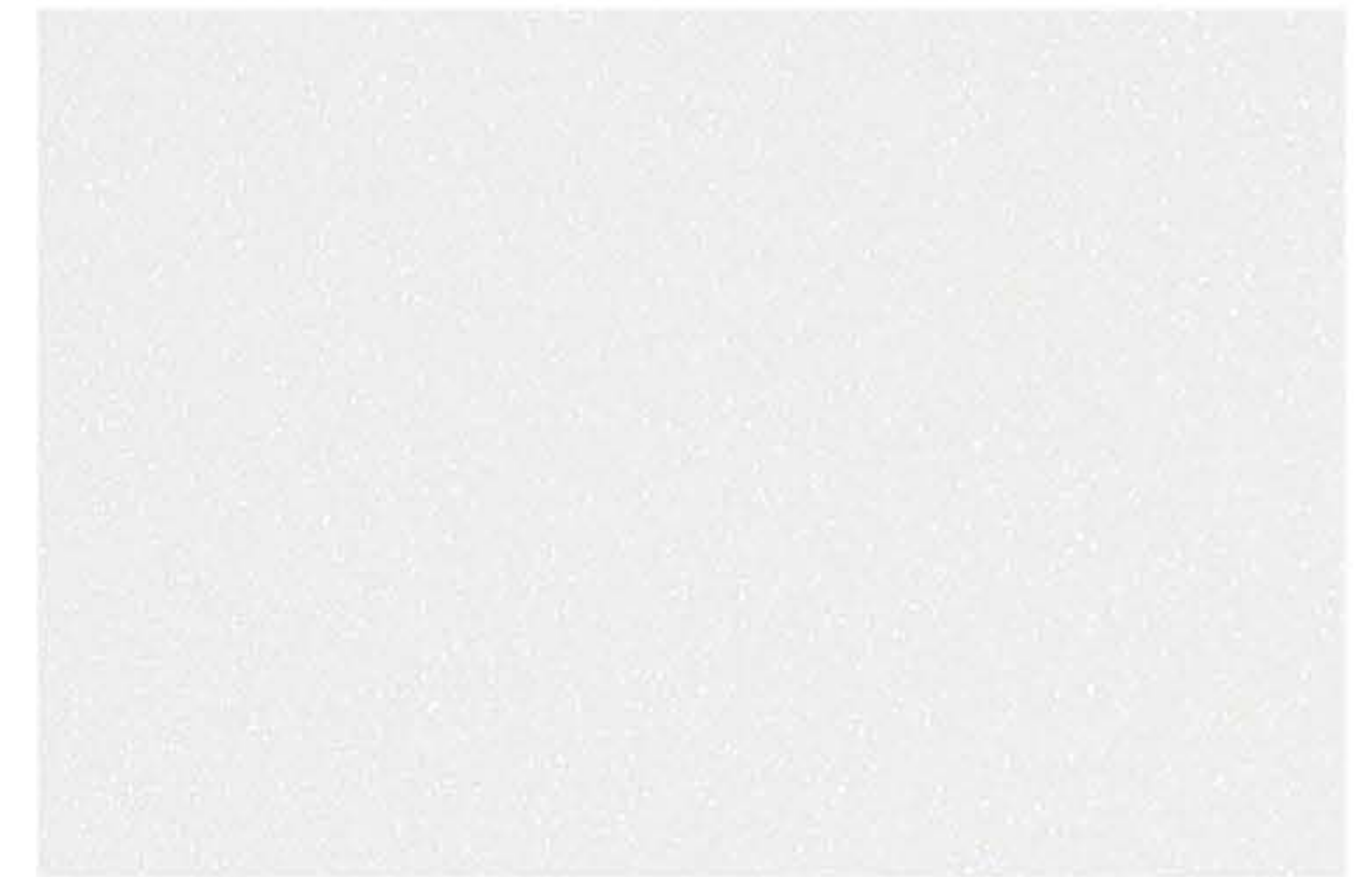
MD 620



Metallic
collection



MD 415



MD 417

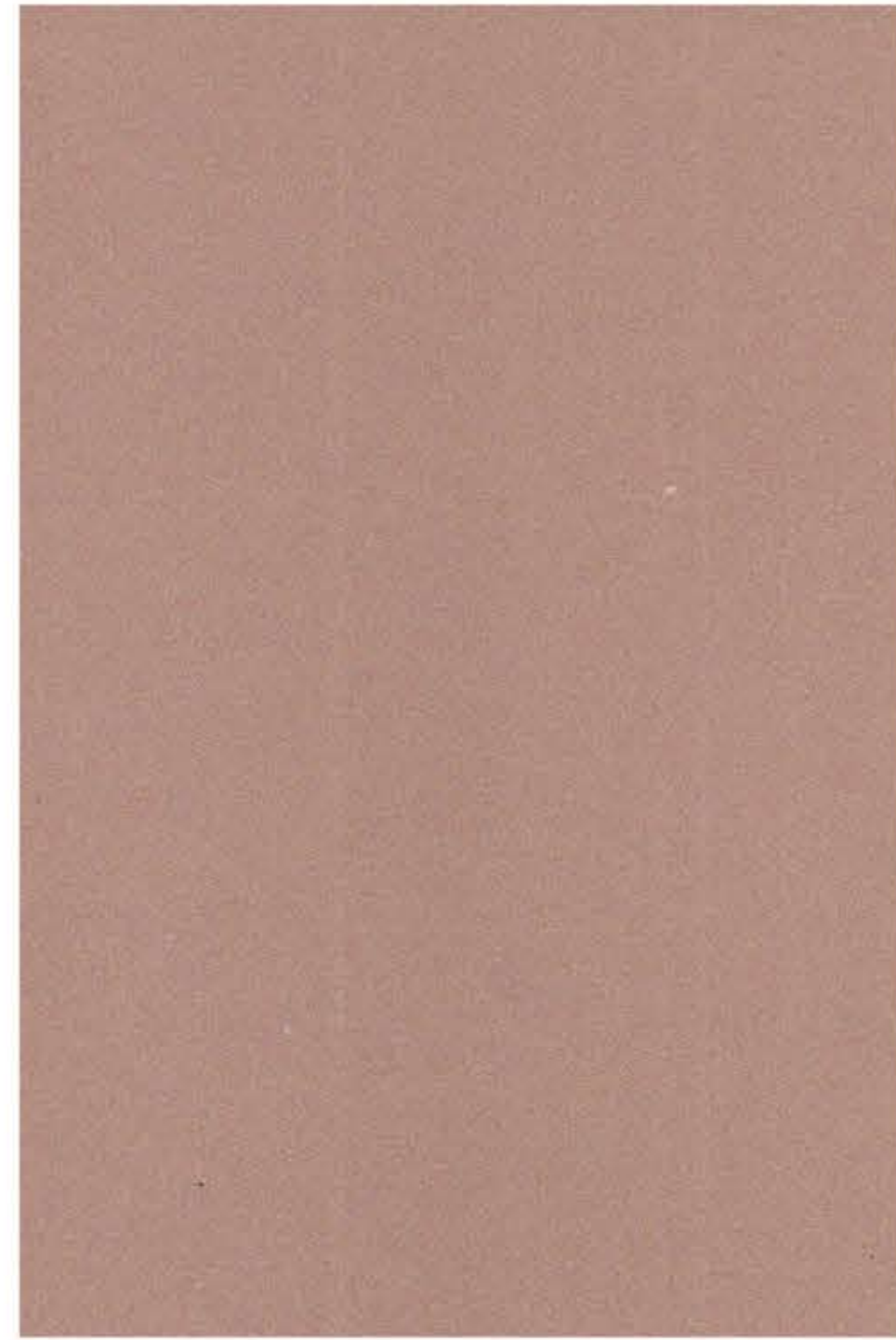


MD 416

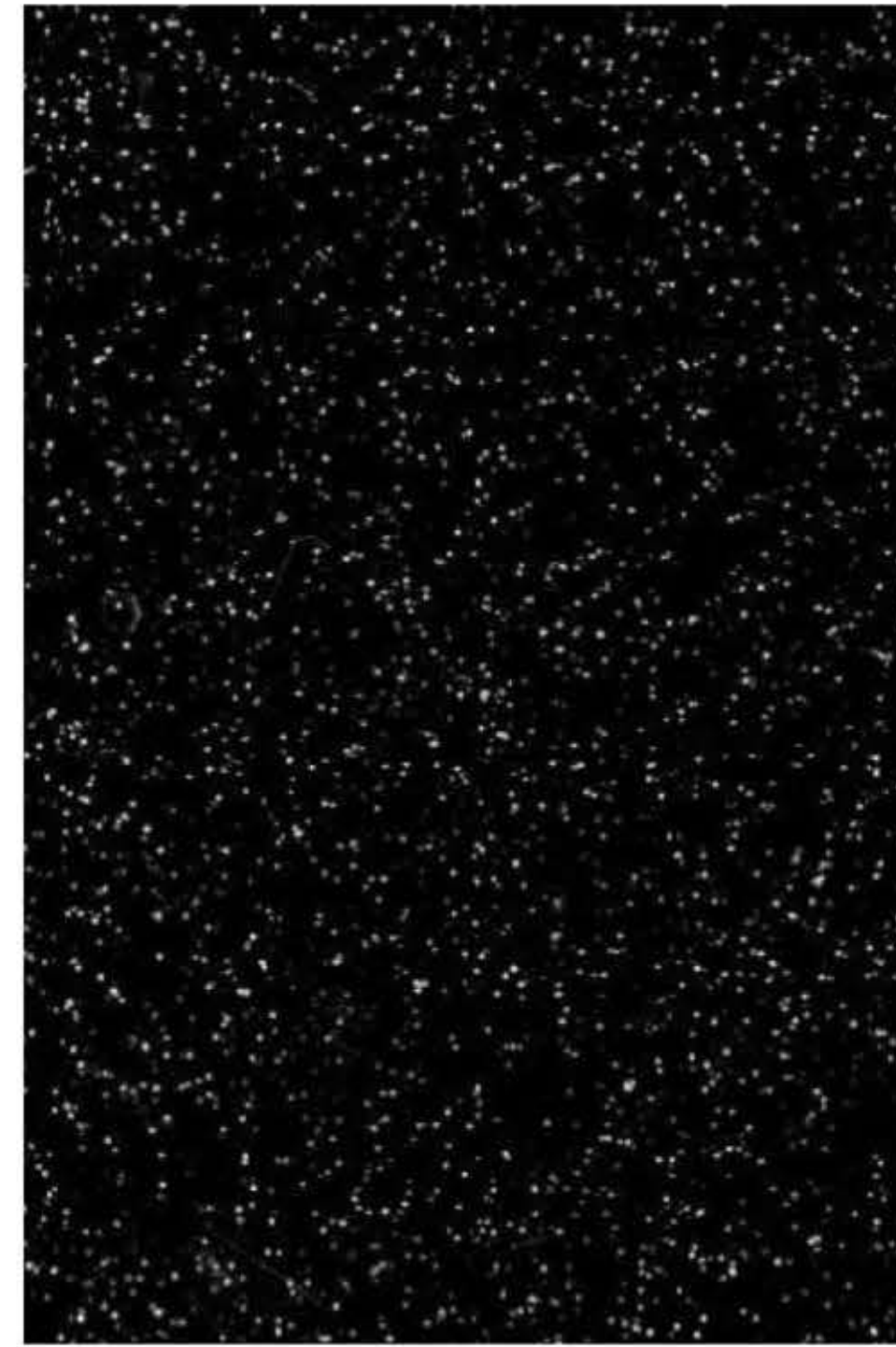




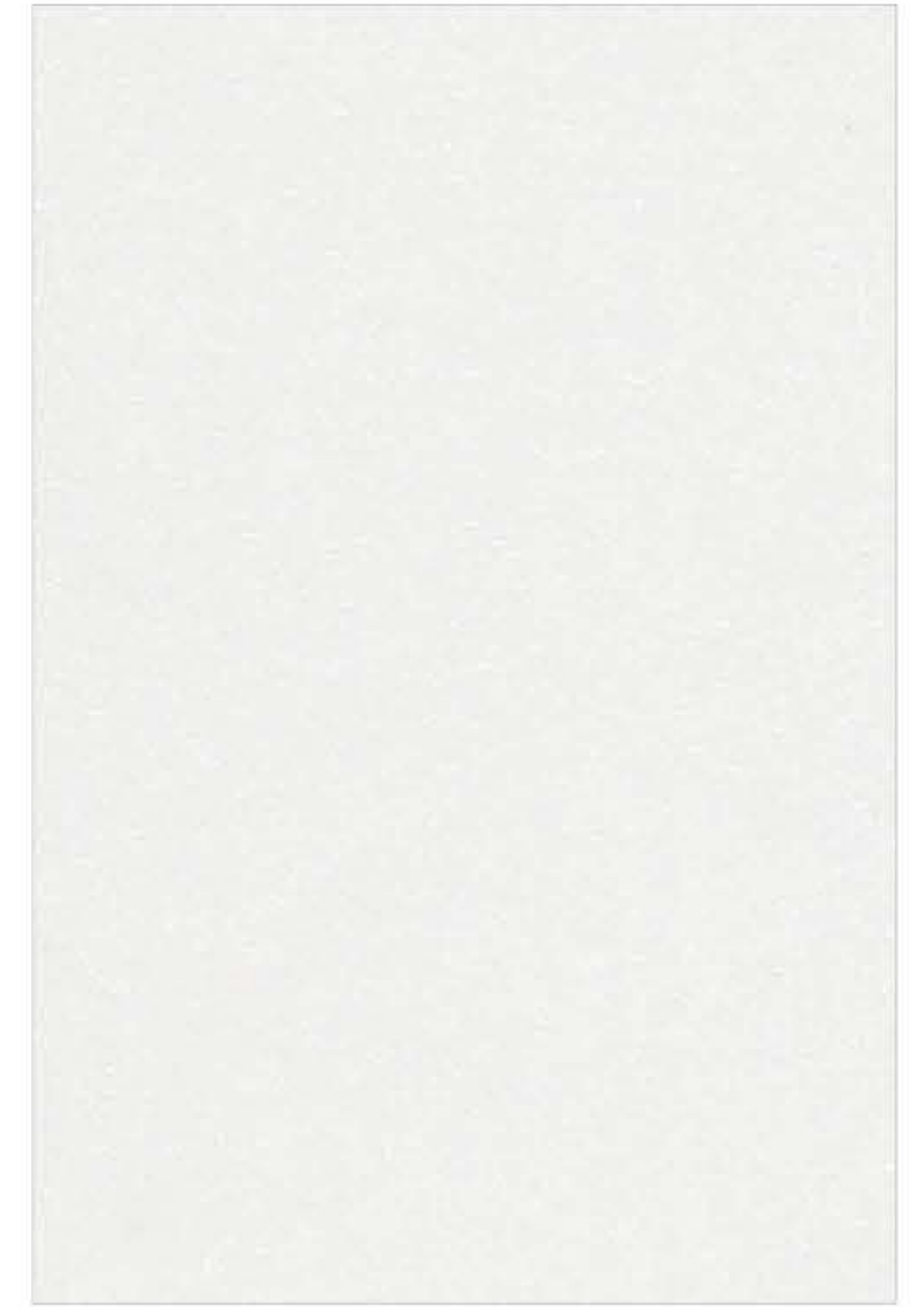
MD 410



MD 427



MD 413



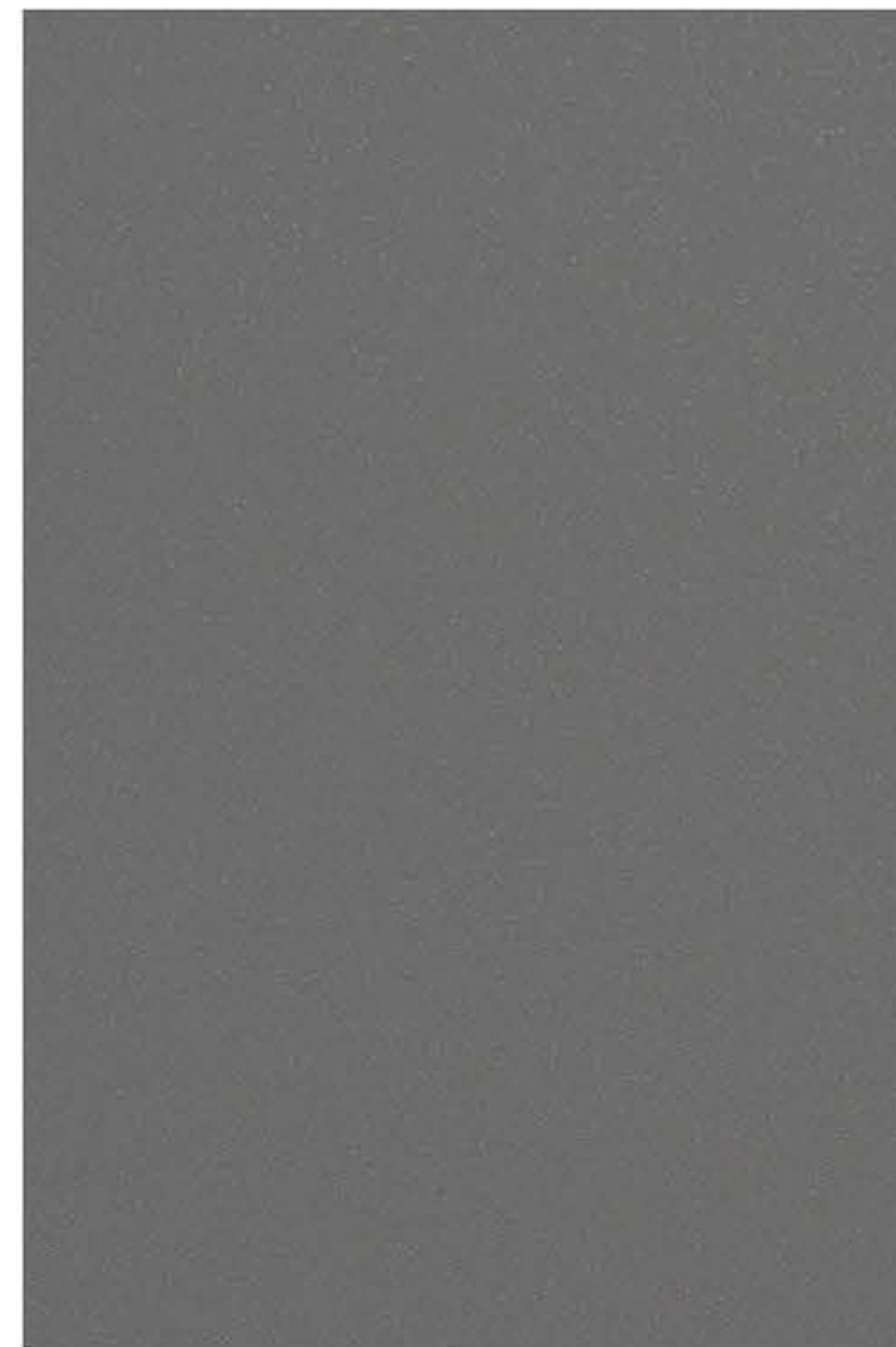
MD 409



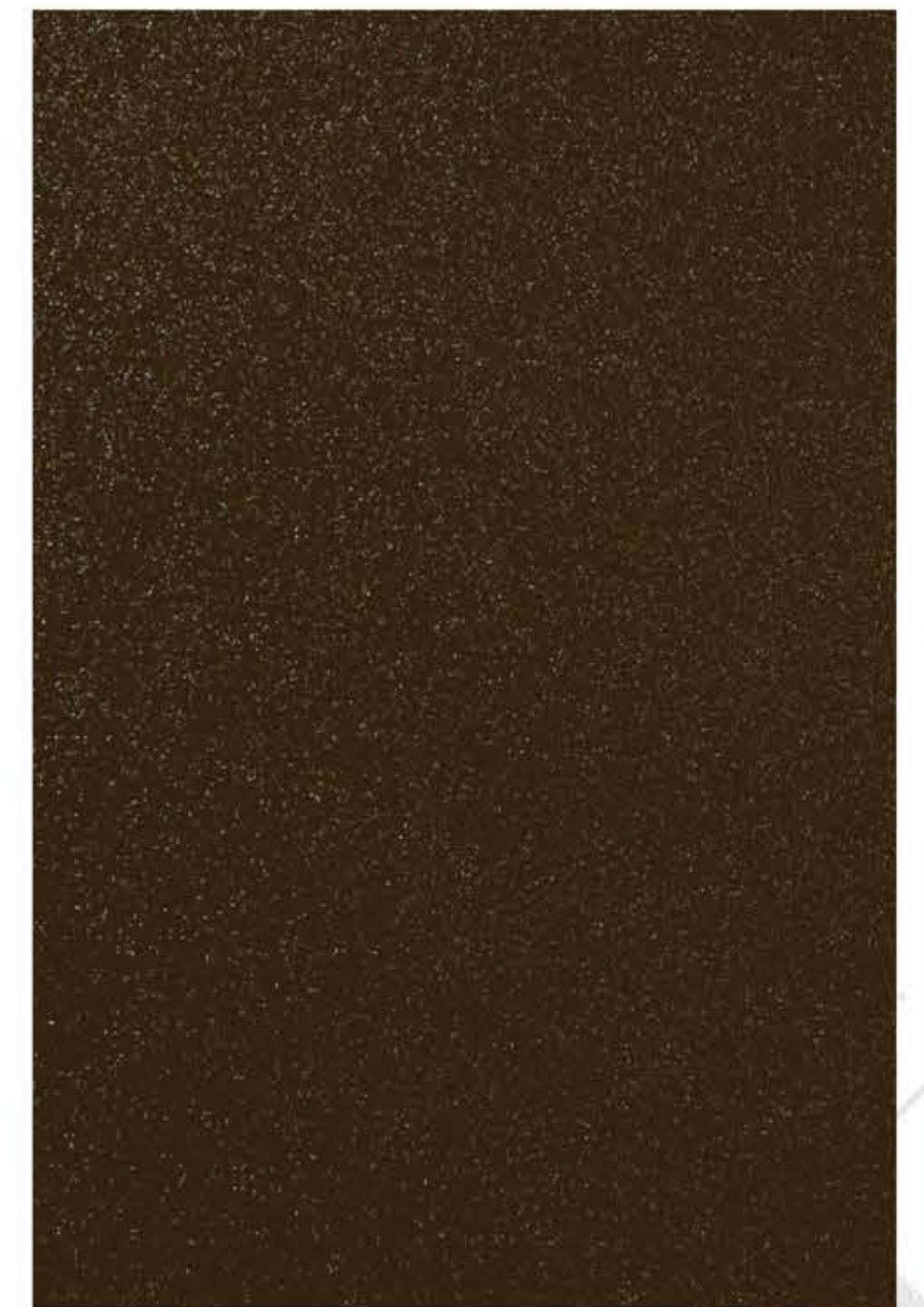
MD 412



MD 414



MD 411

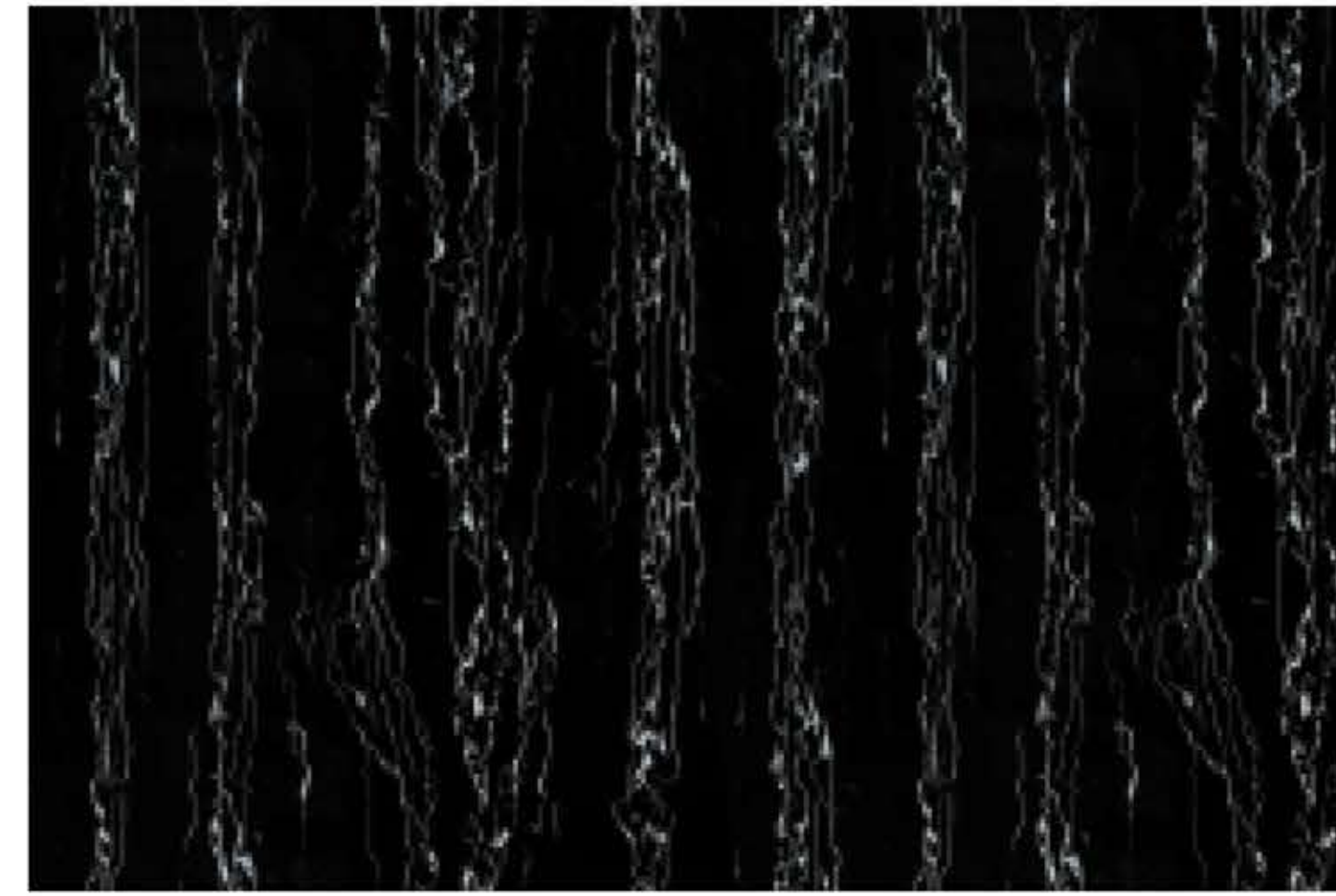


MD 426



MD 422

MD 418



MD 420

MD 419



MD 423

MD 421

Abstract collection

ABSTRACT COLLECTION

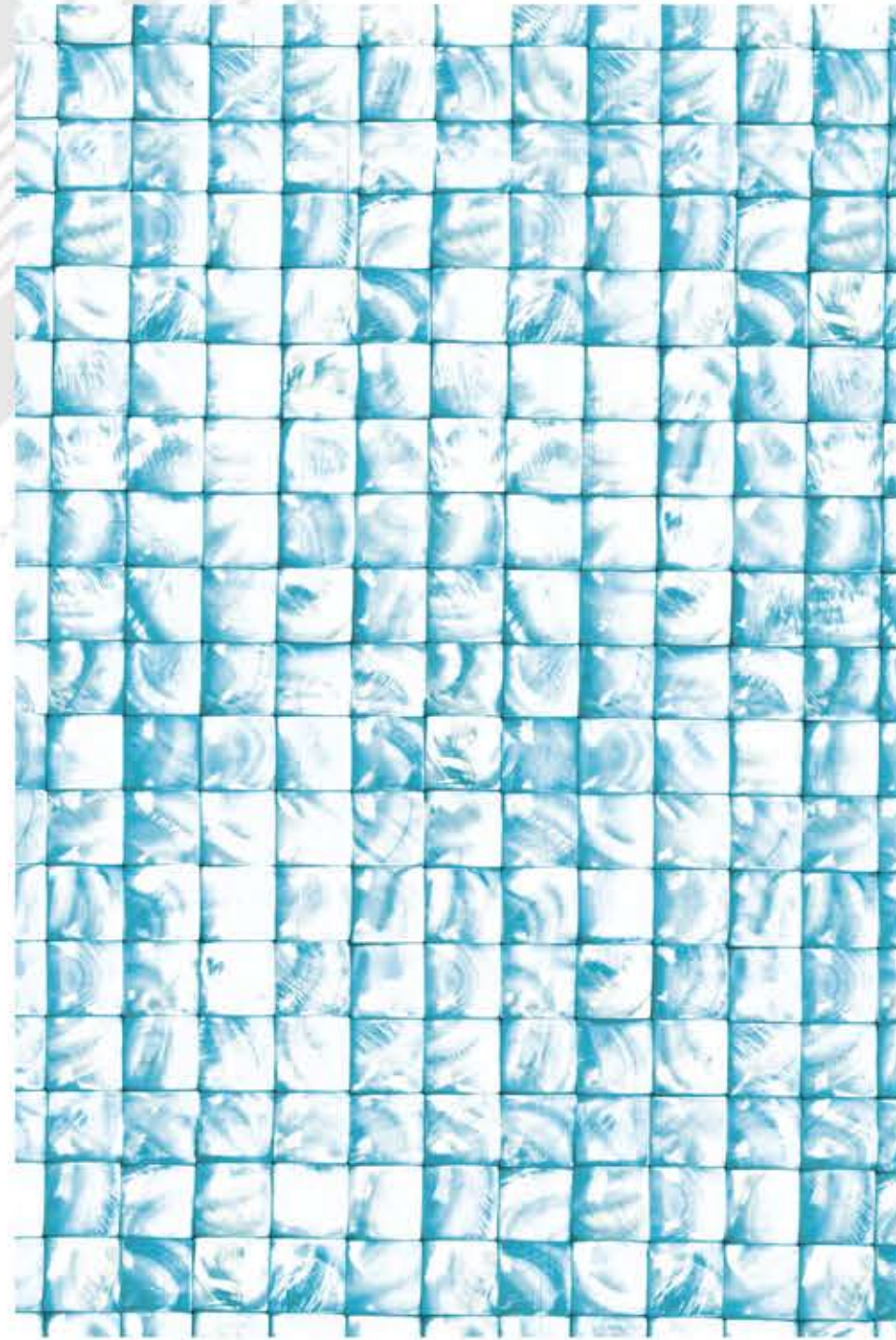
MISTIKA DECOR®
Premium PVC Decorative Laminates



MD 428



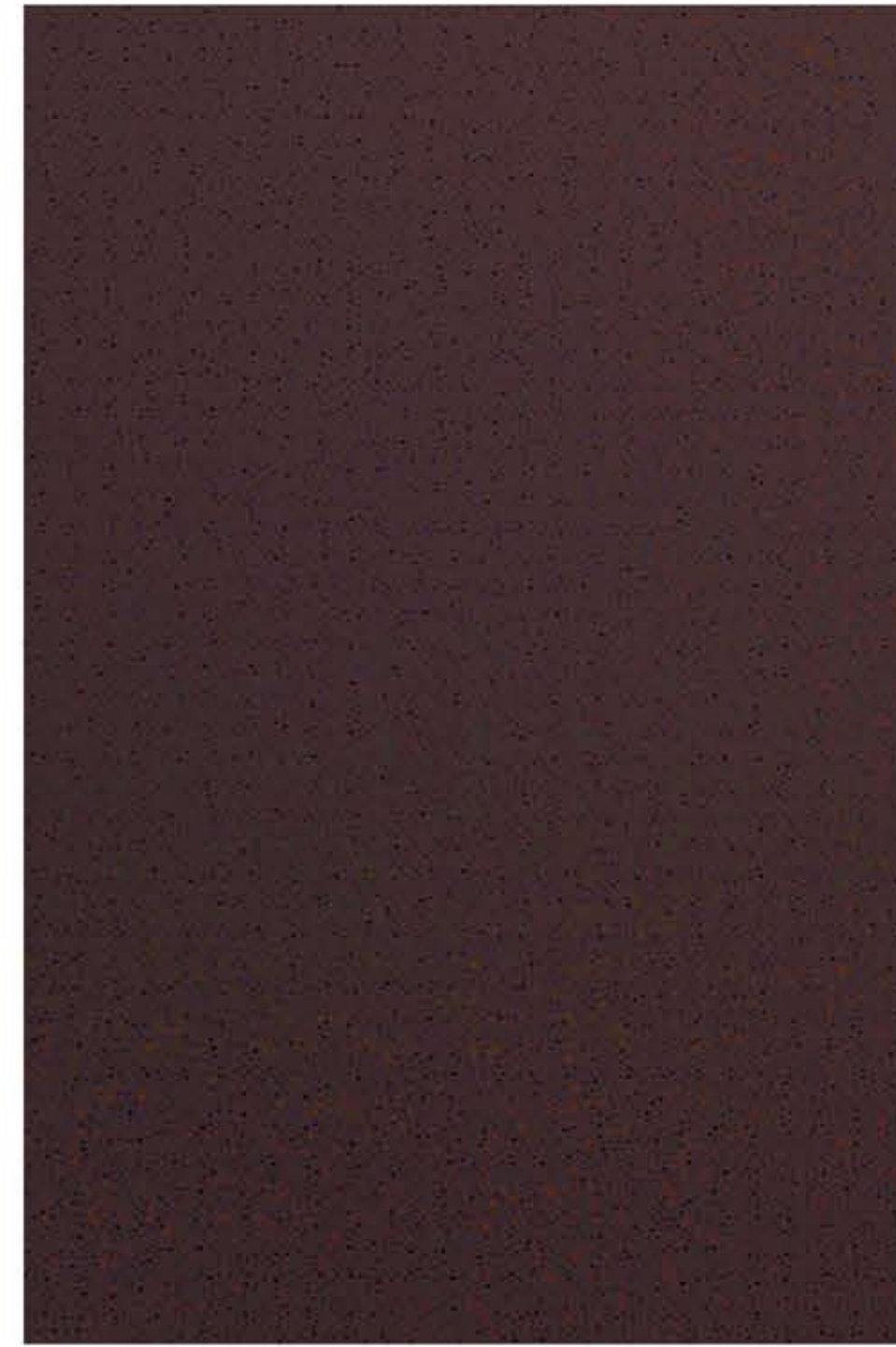
MD 429



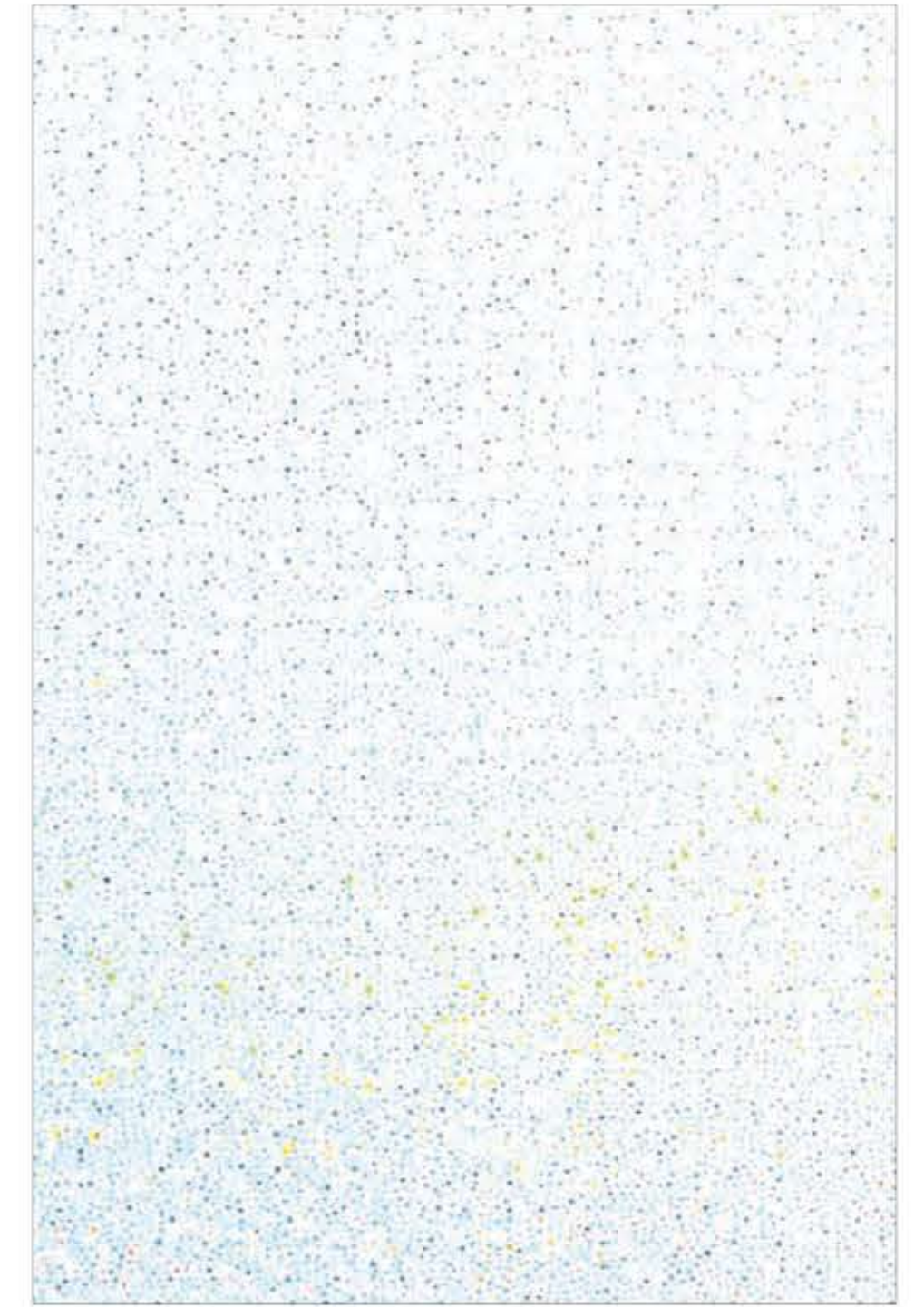
MD 302



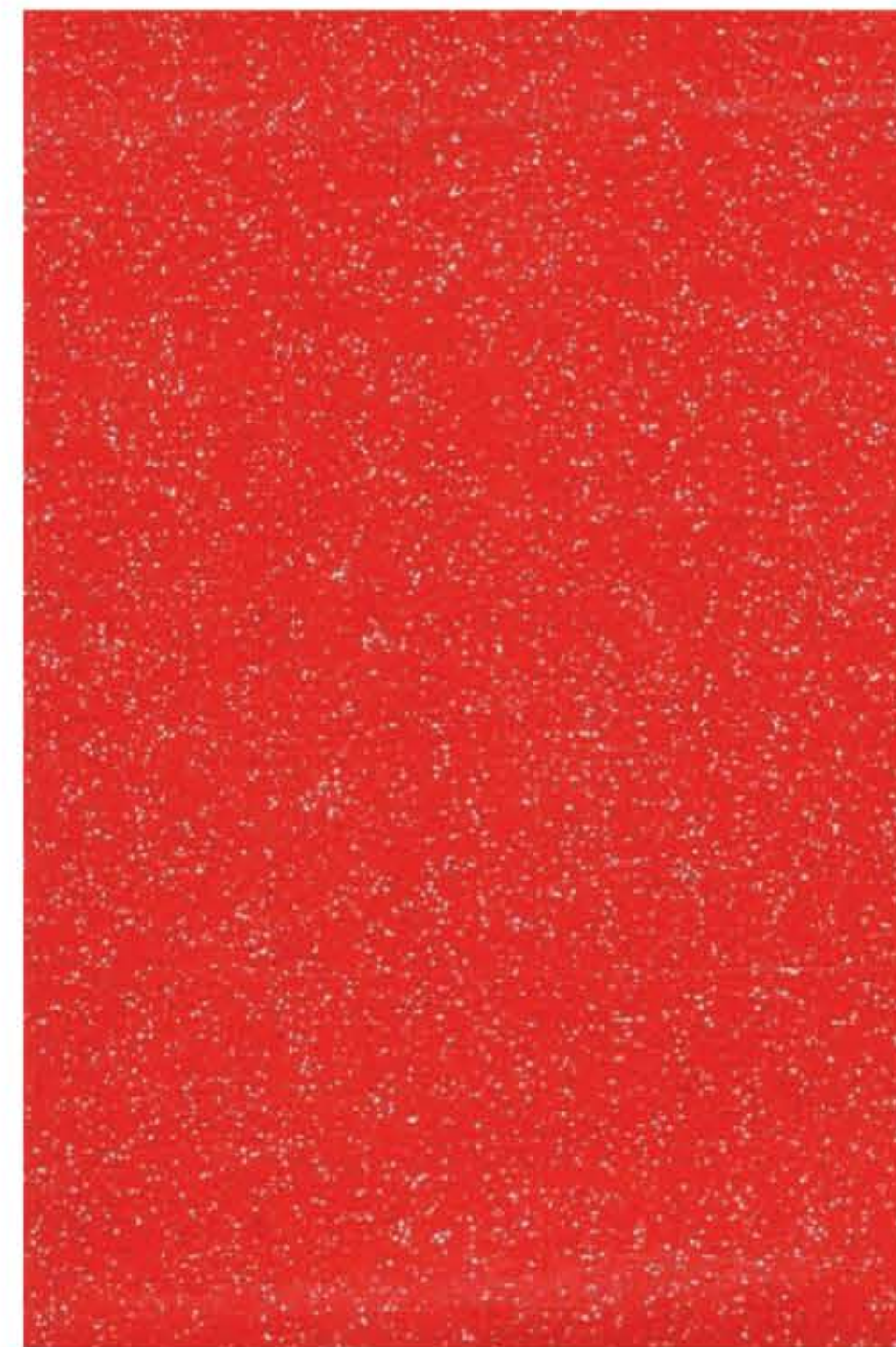
MD 301



MD 624



MD 623



MD 625



MD 626



MD 424



MD 425



MD 304



MD 303



MD 305



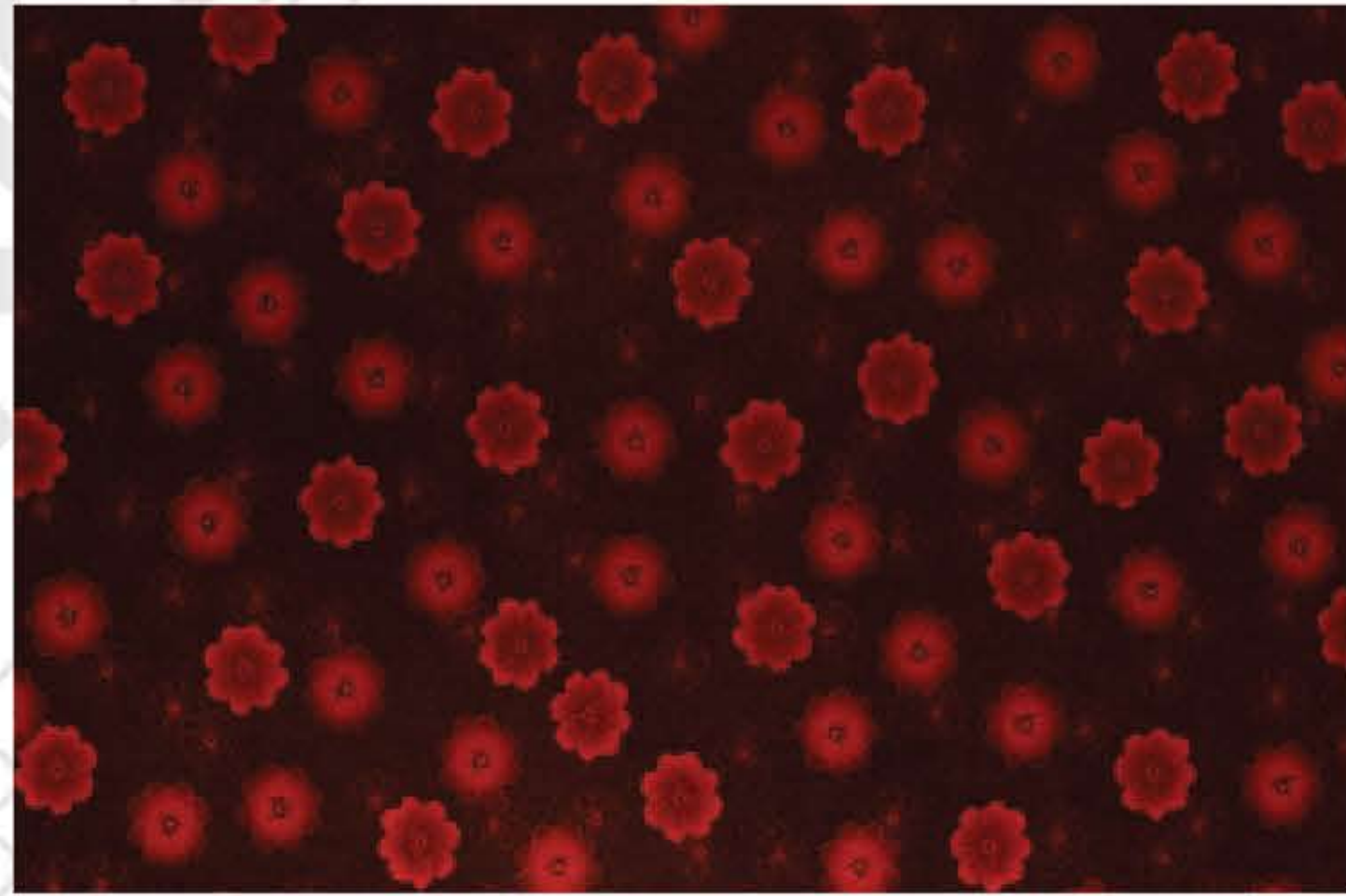
MD 306



MD 307



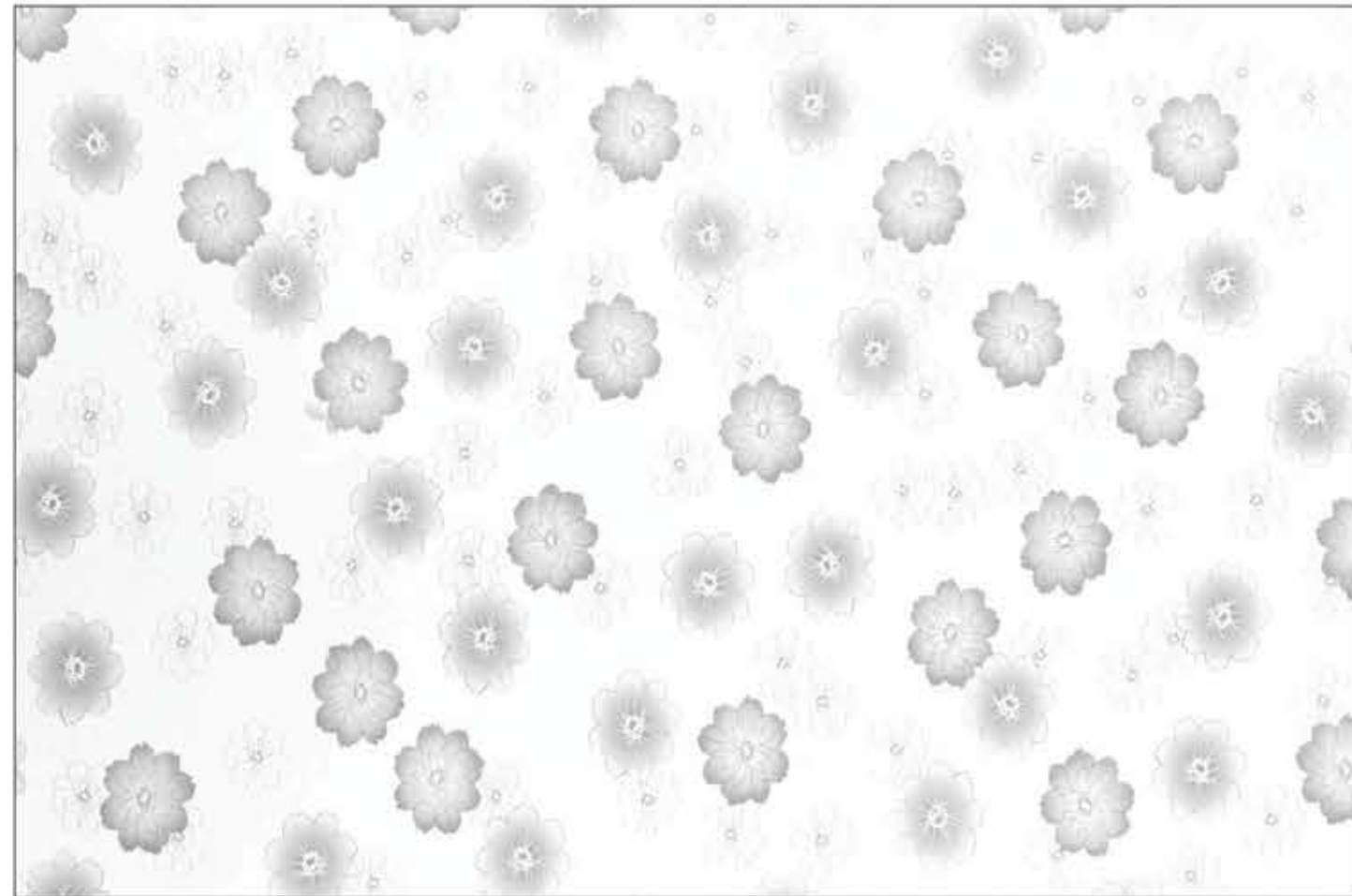
MD 308



MD 309



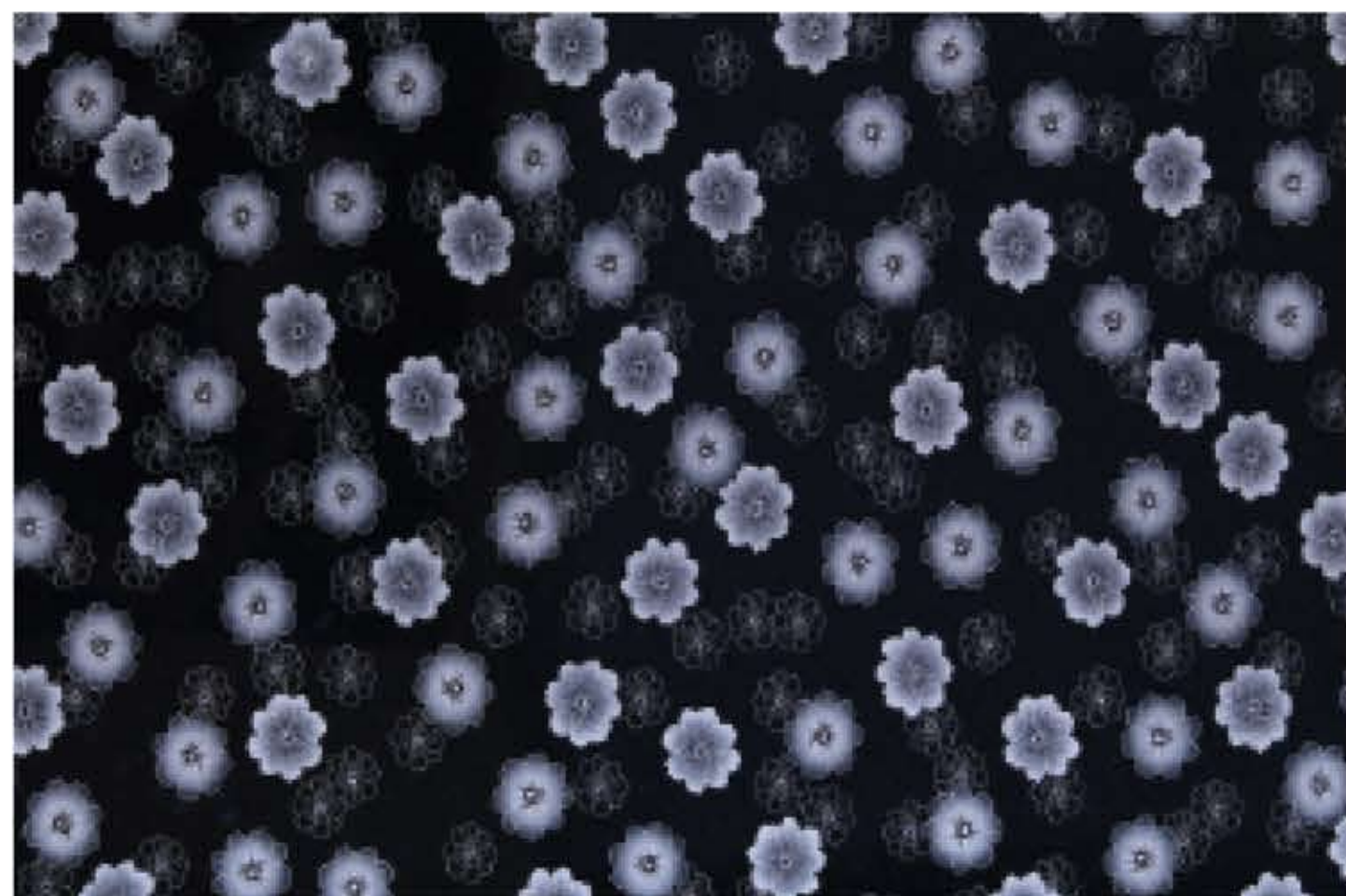
MD 321



MD 311



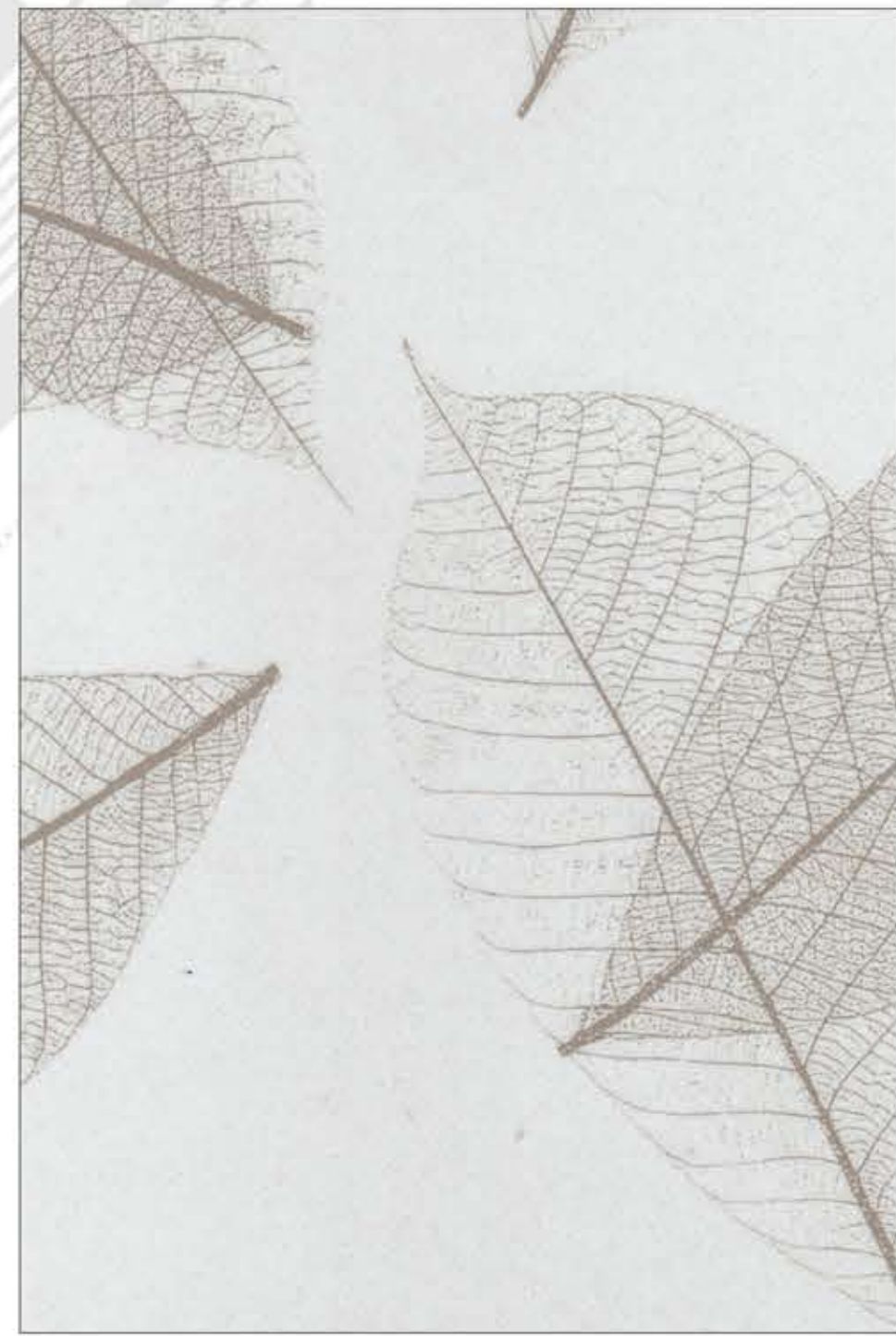
MD 322



MD 310



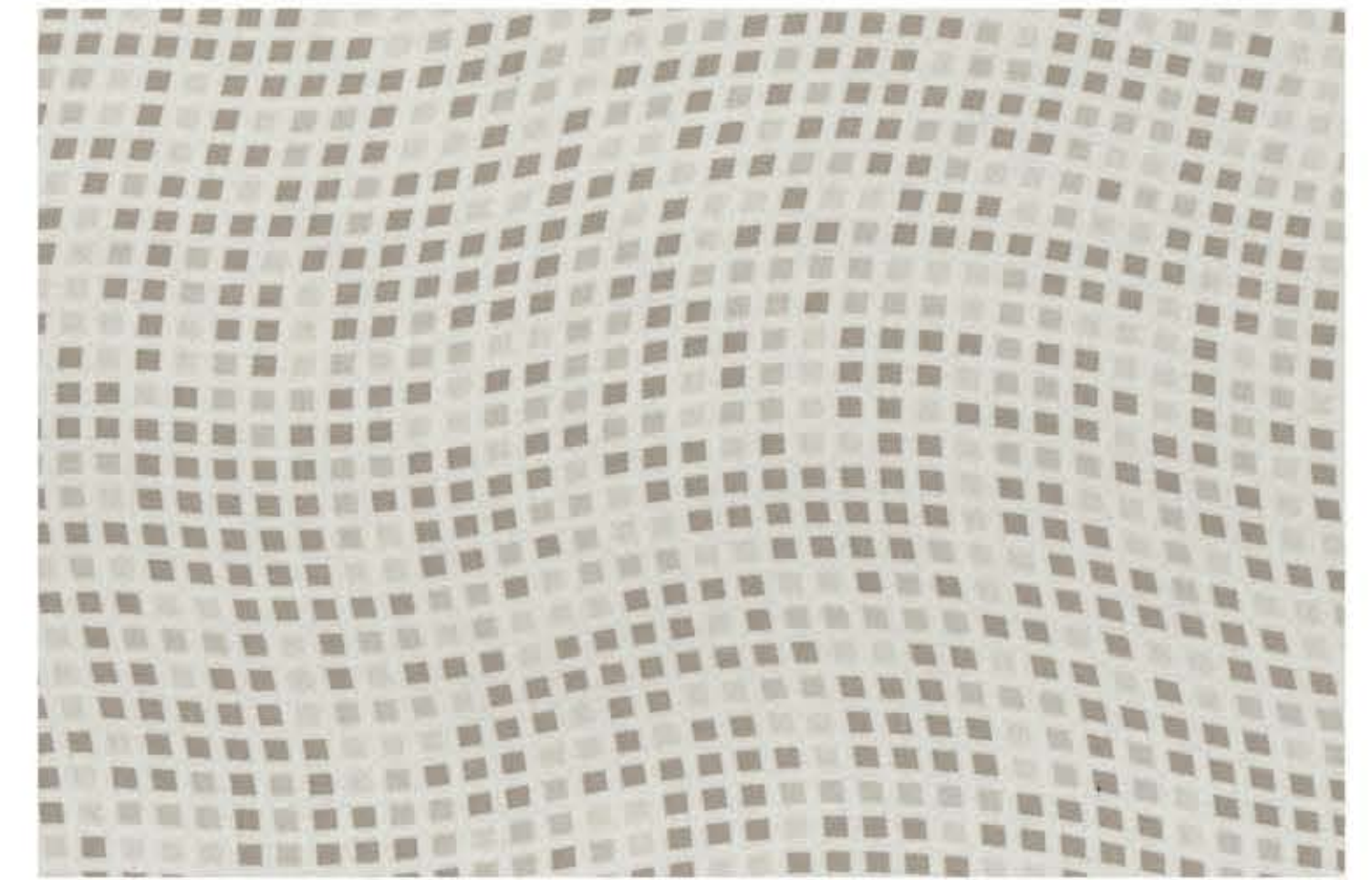
MD 323



MD 318



MD 317



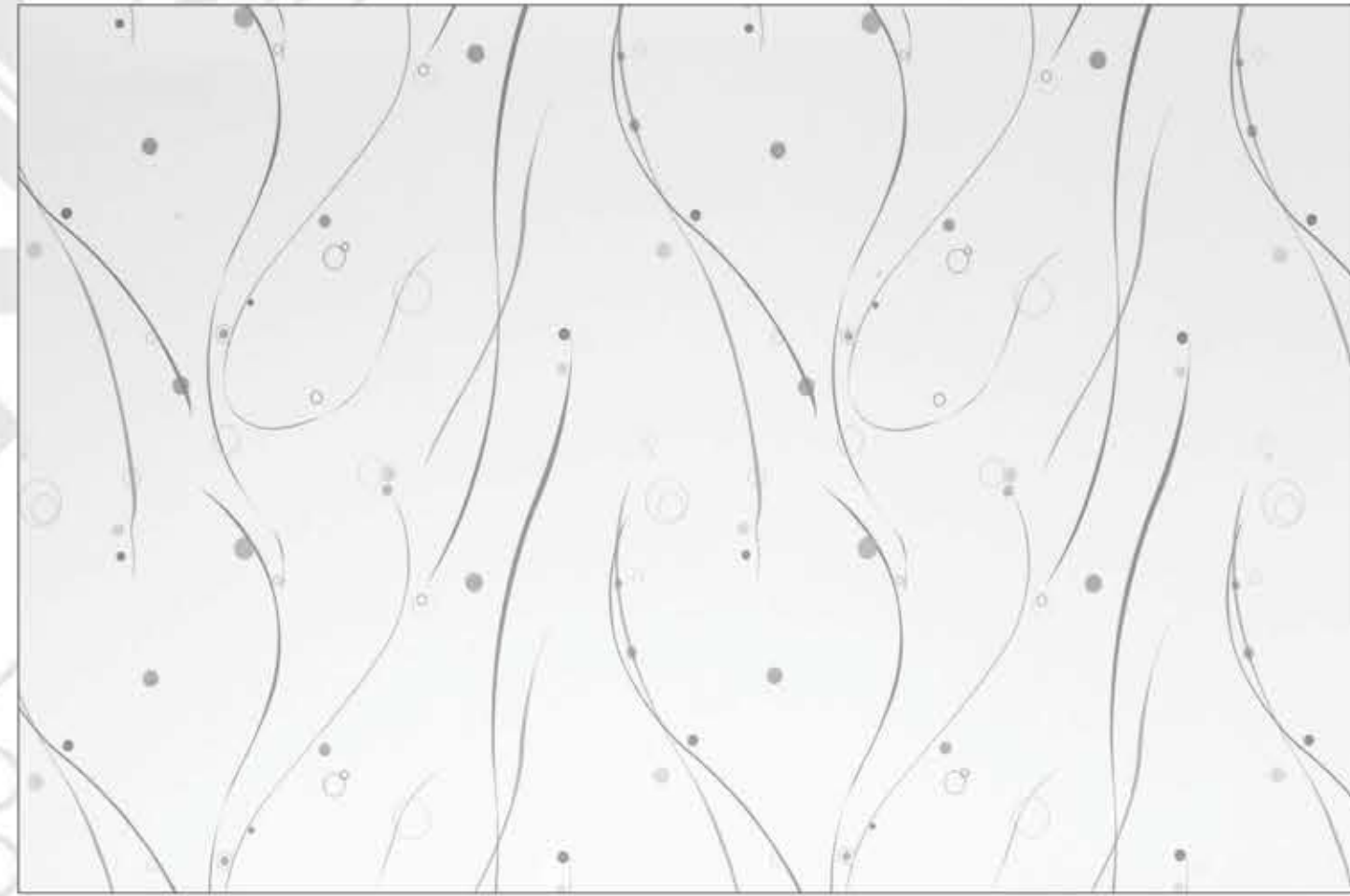
MD 313



MD 314



MD 312



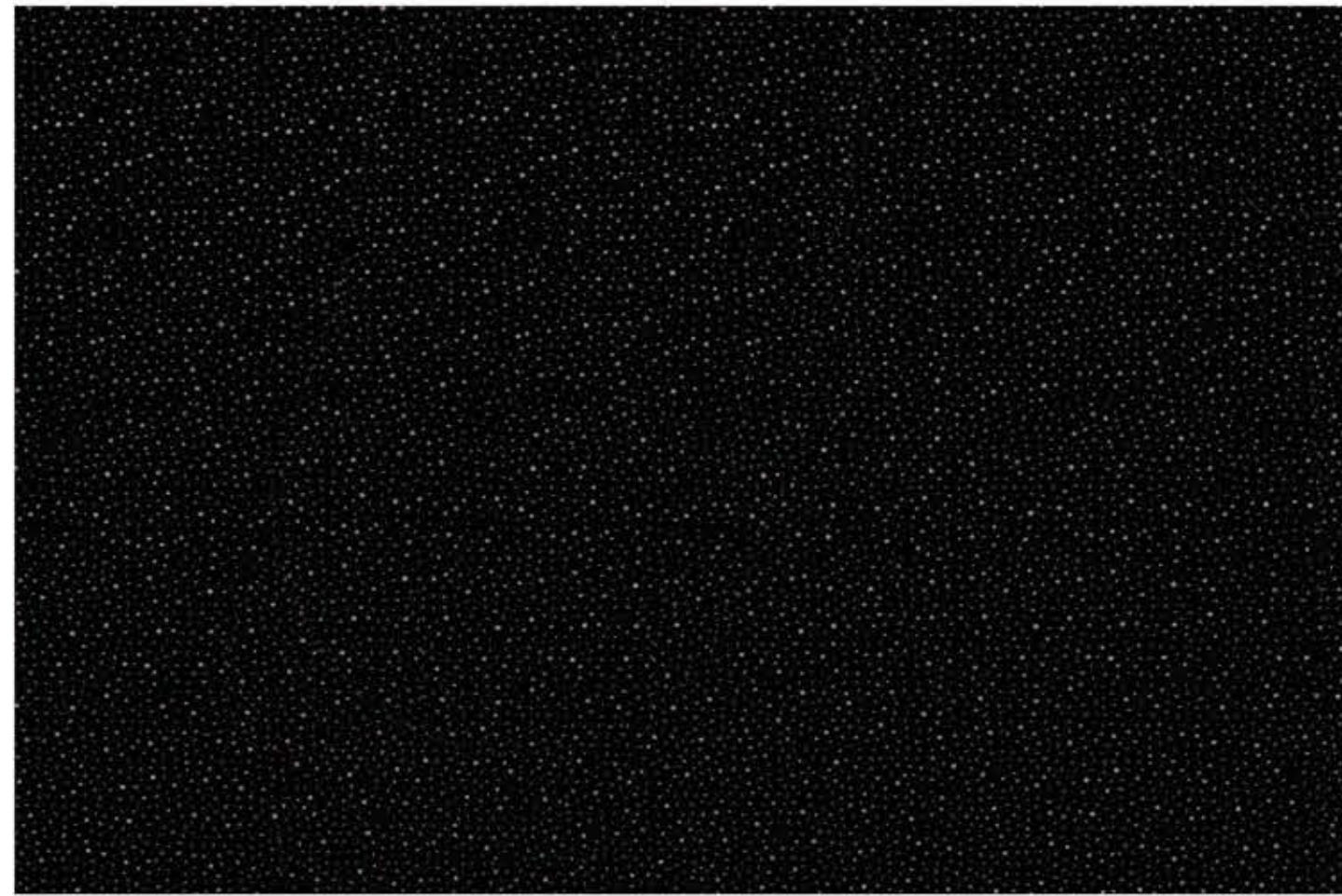
MD 334



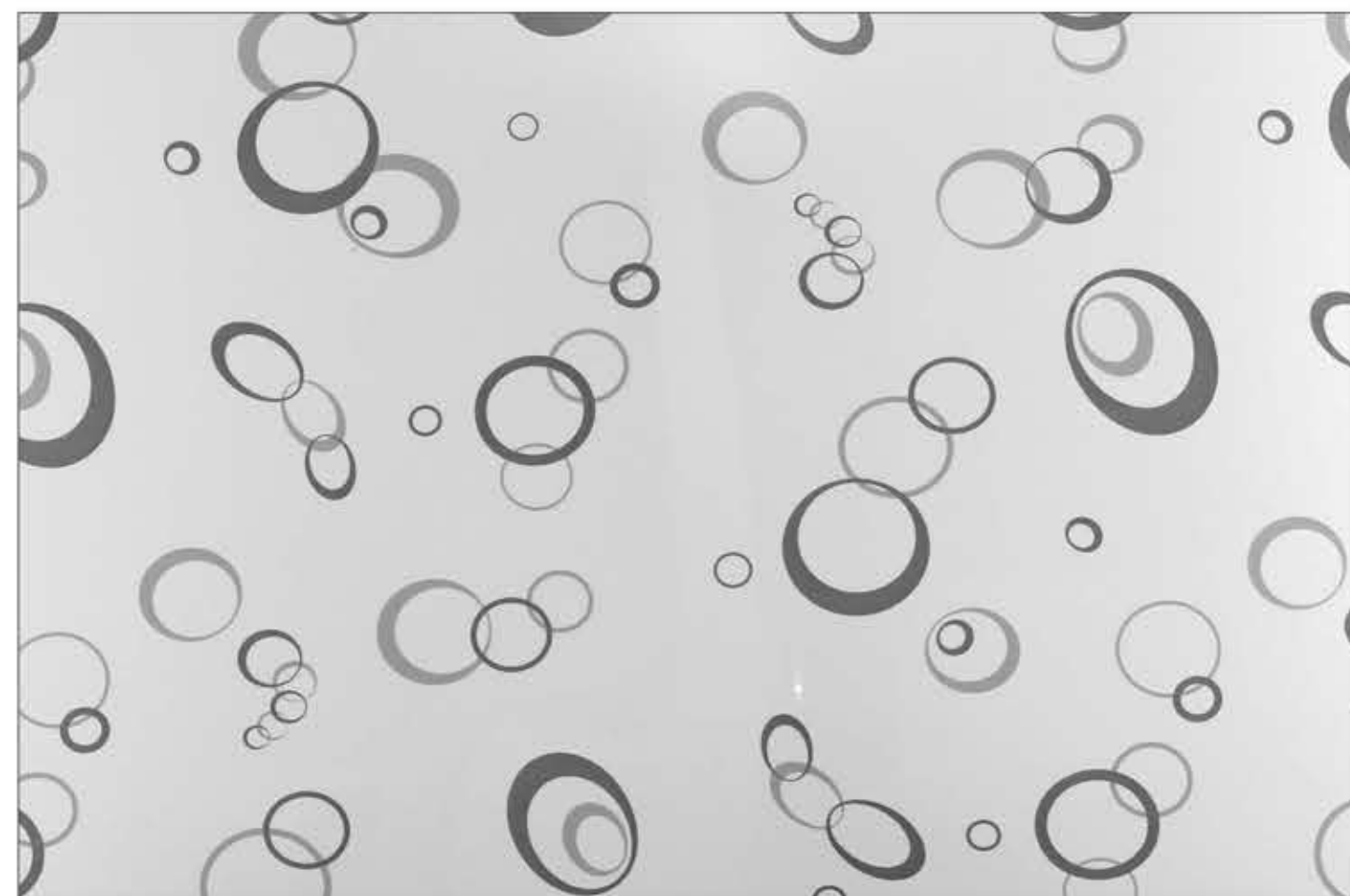
MD 330



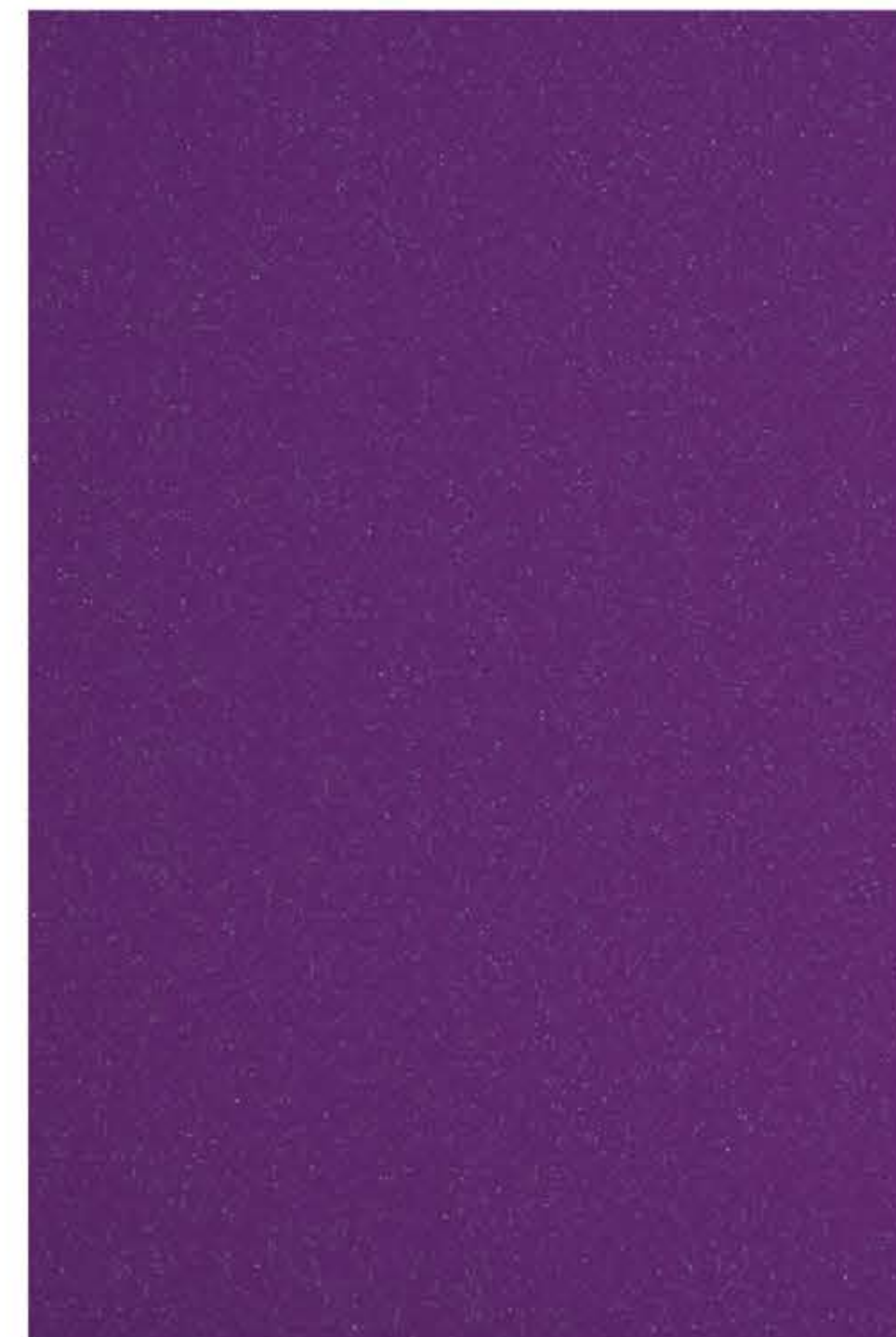
MD 331



MD 113



MD 332



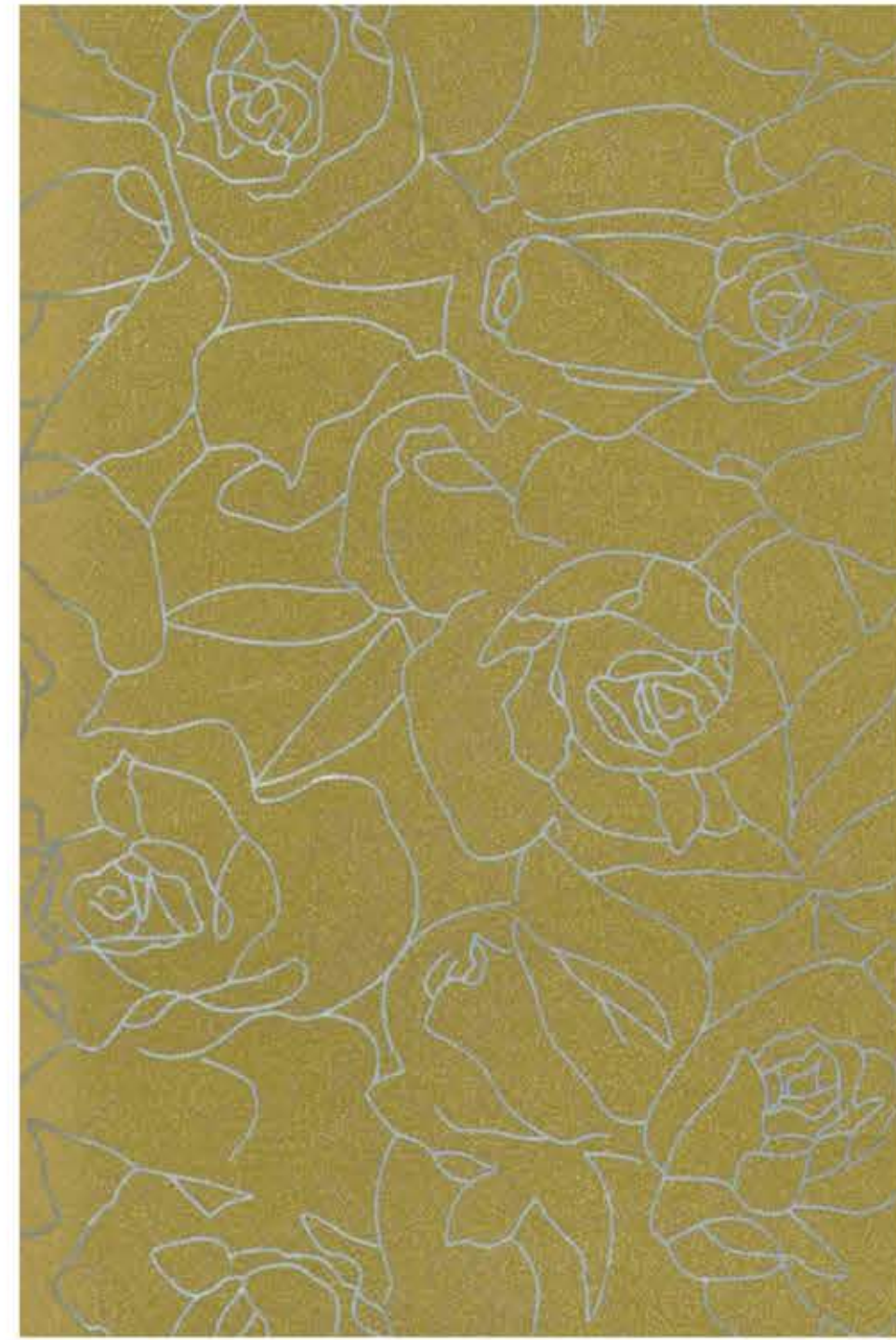
MD 115



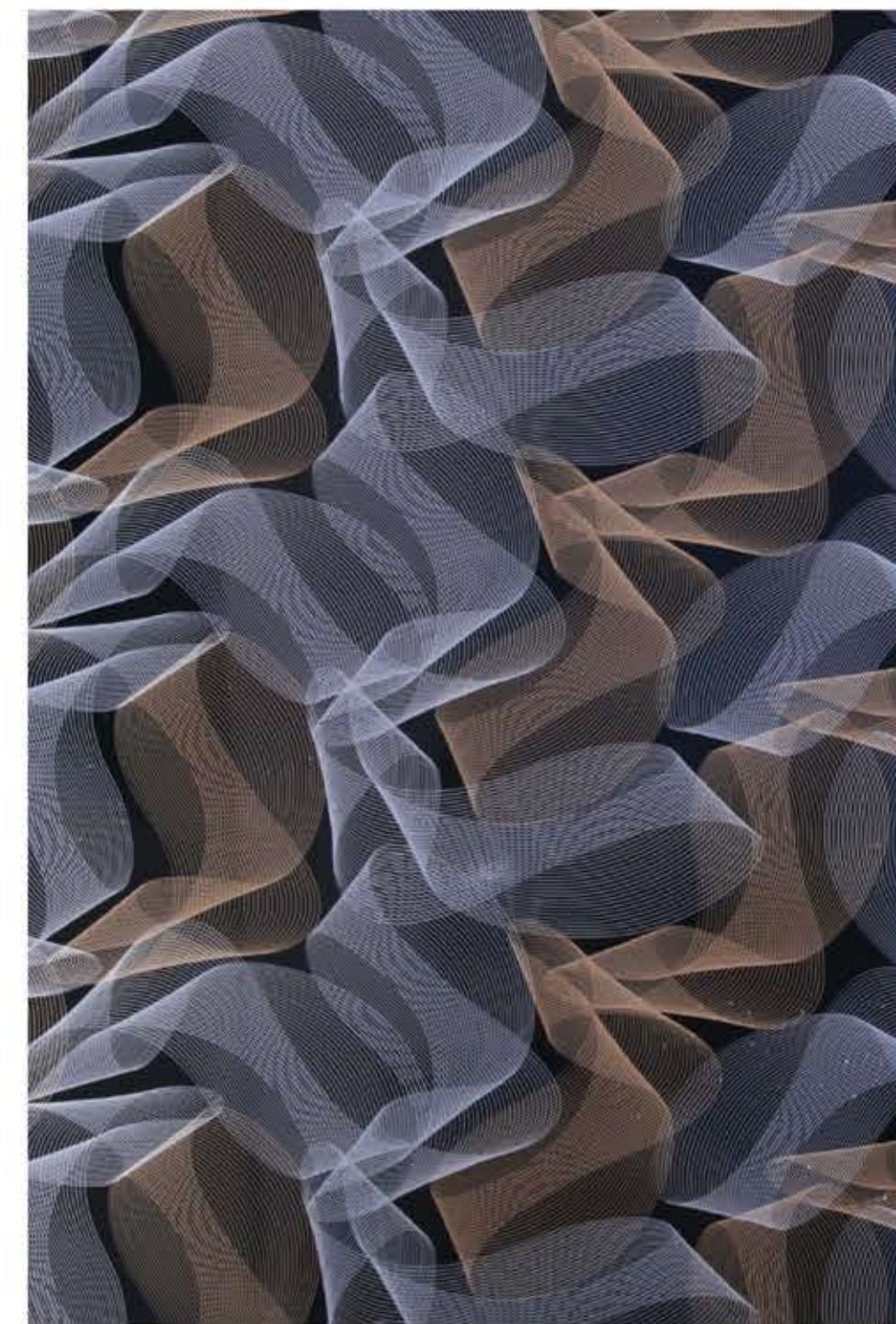
MD 333



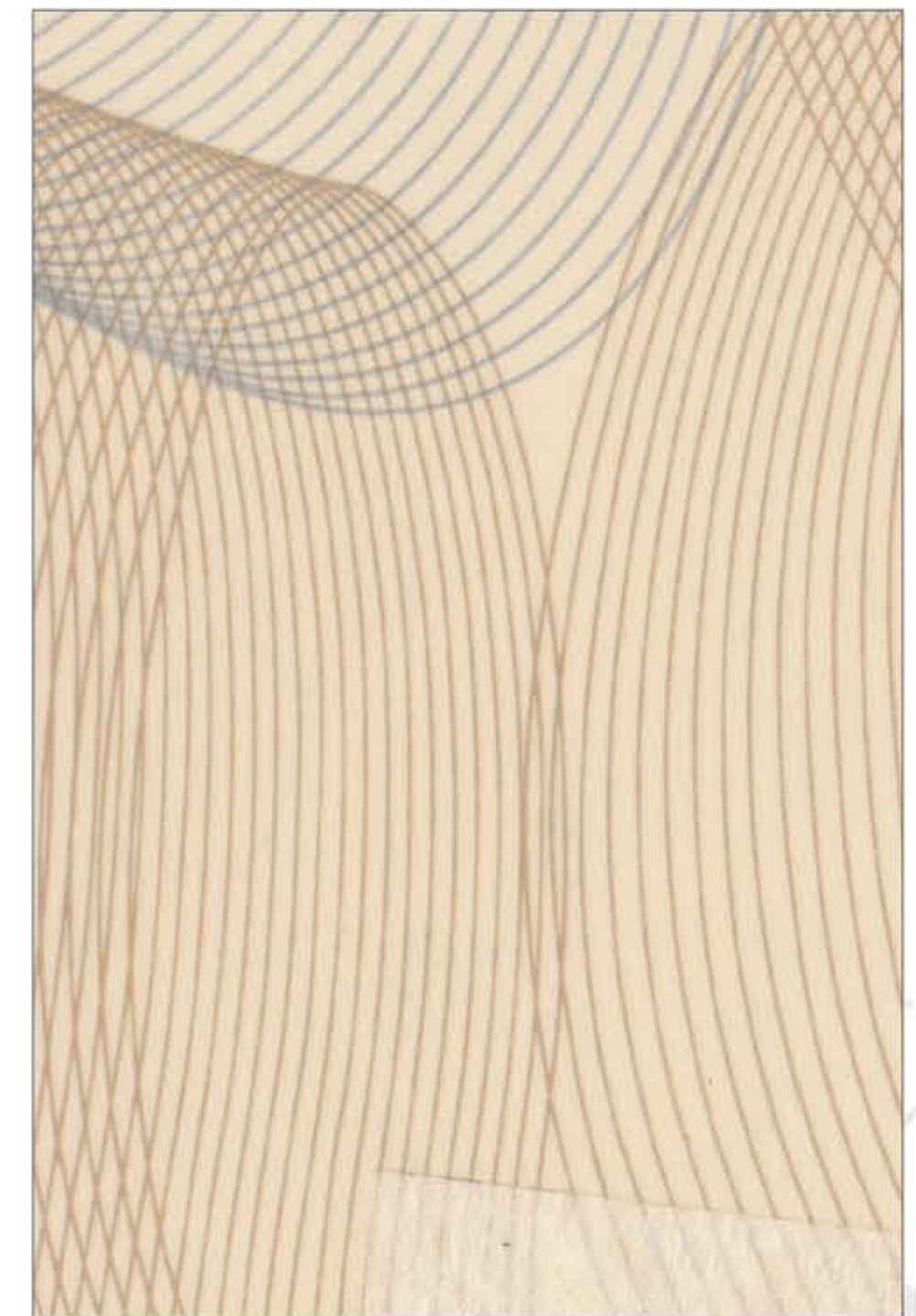
MD 320



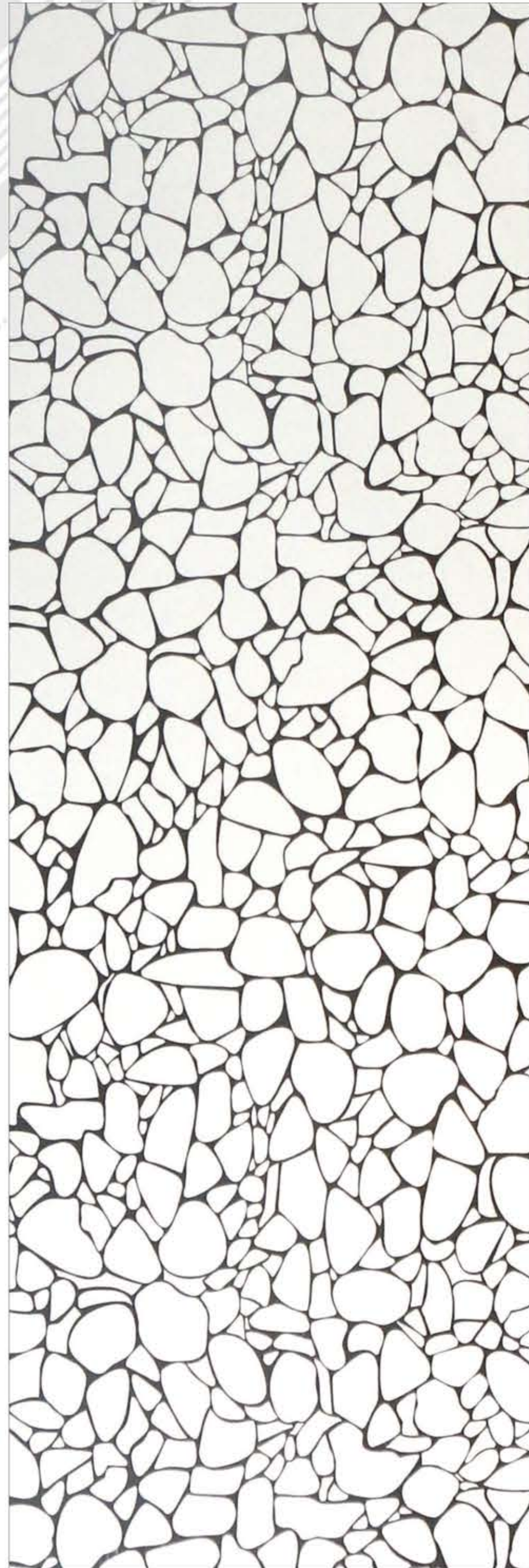
MD 319



MD 315



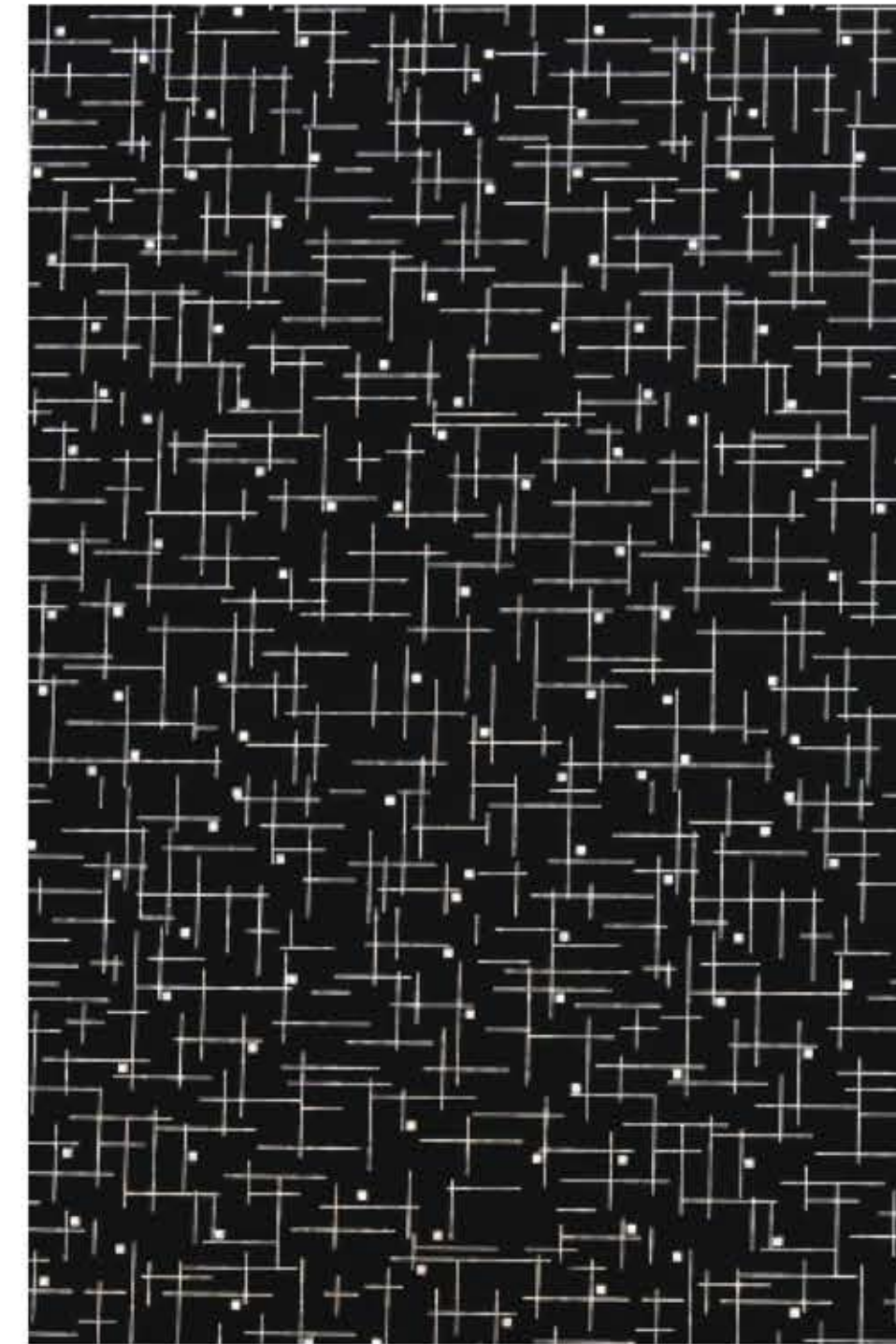
MD 316



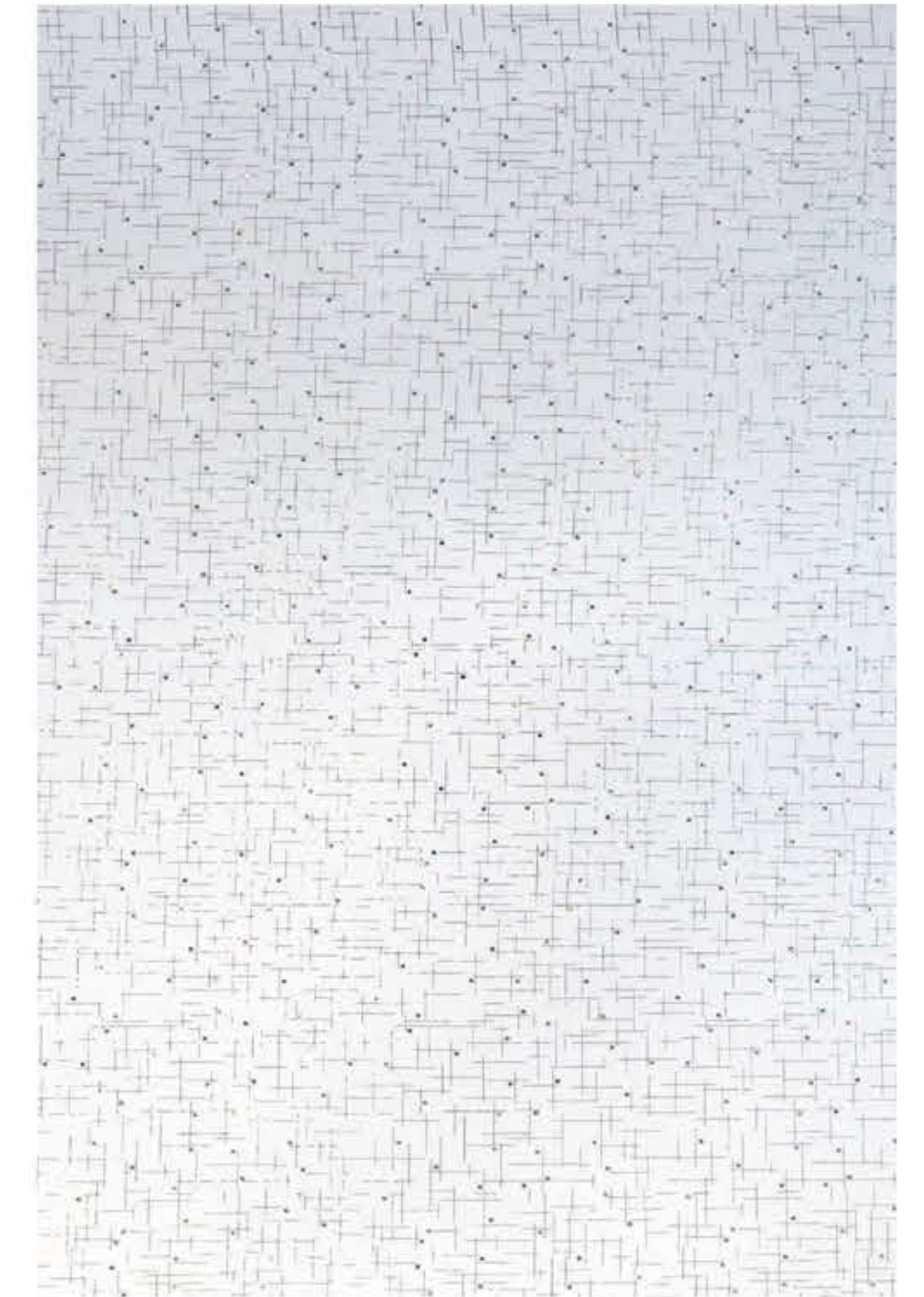
MD 328



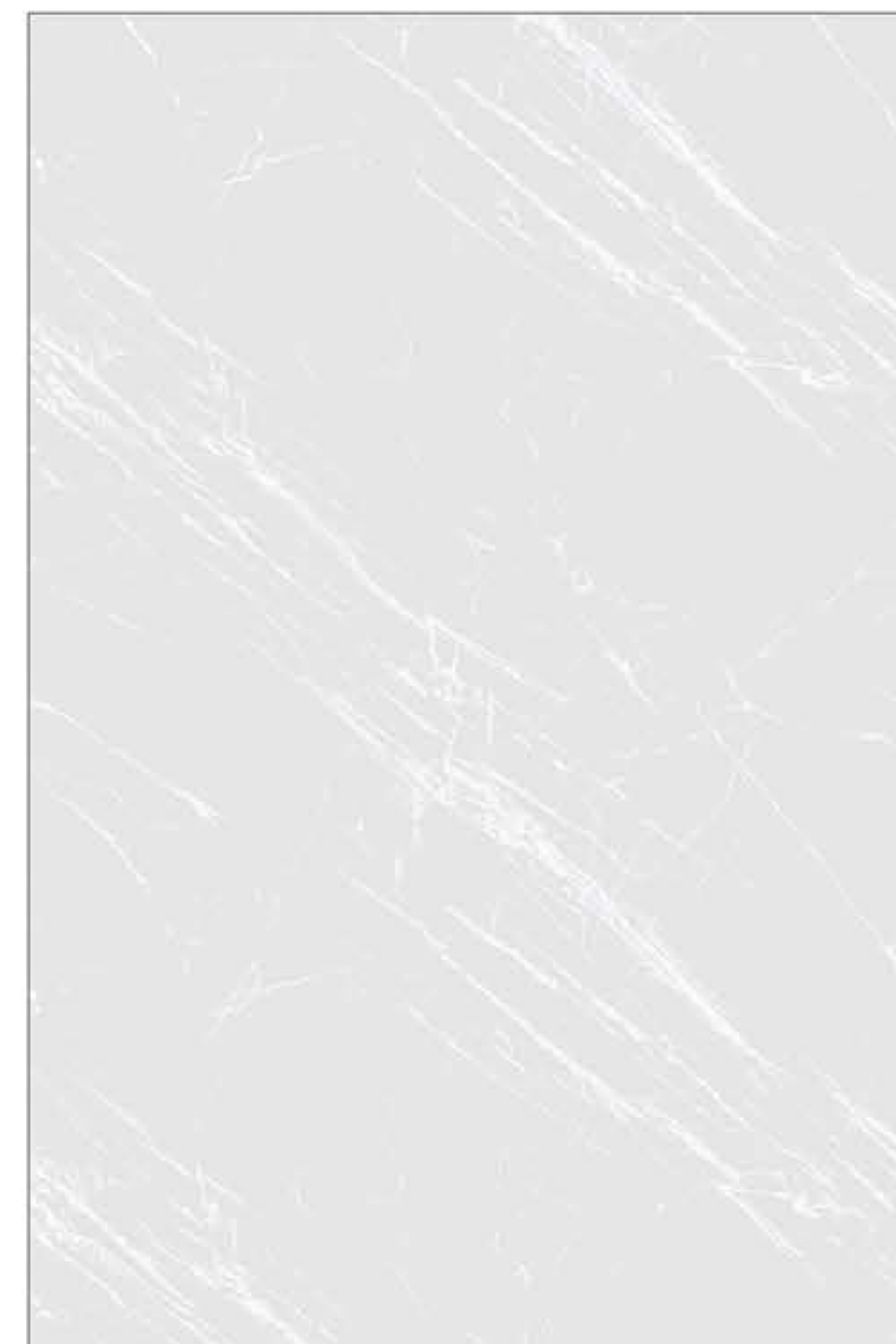
MD 329



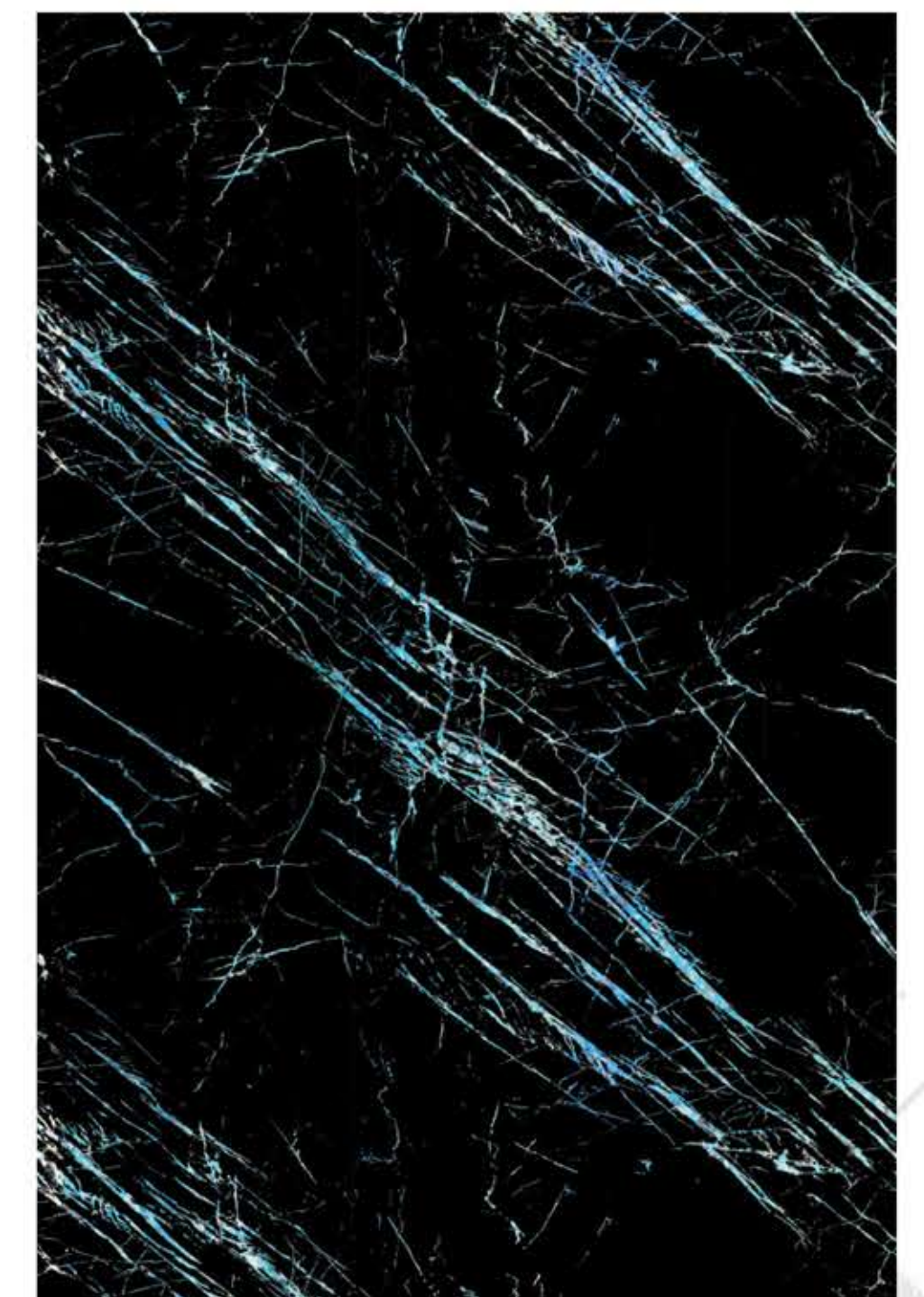
MD 324



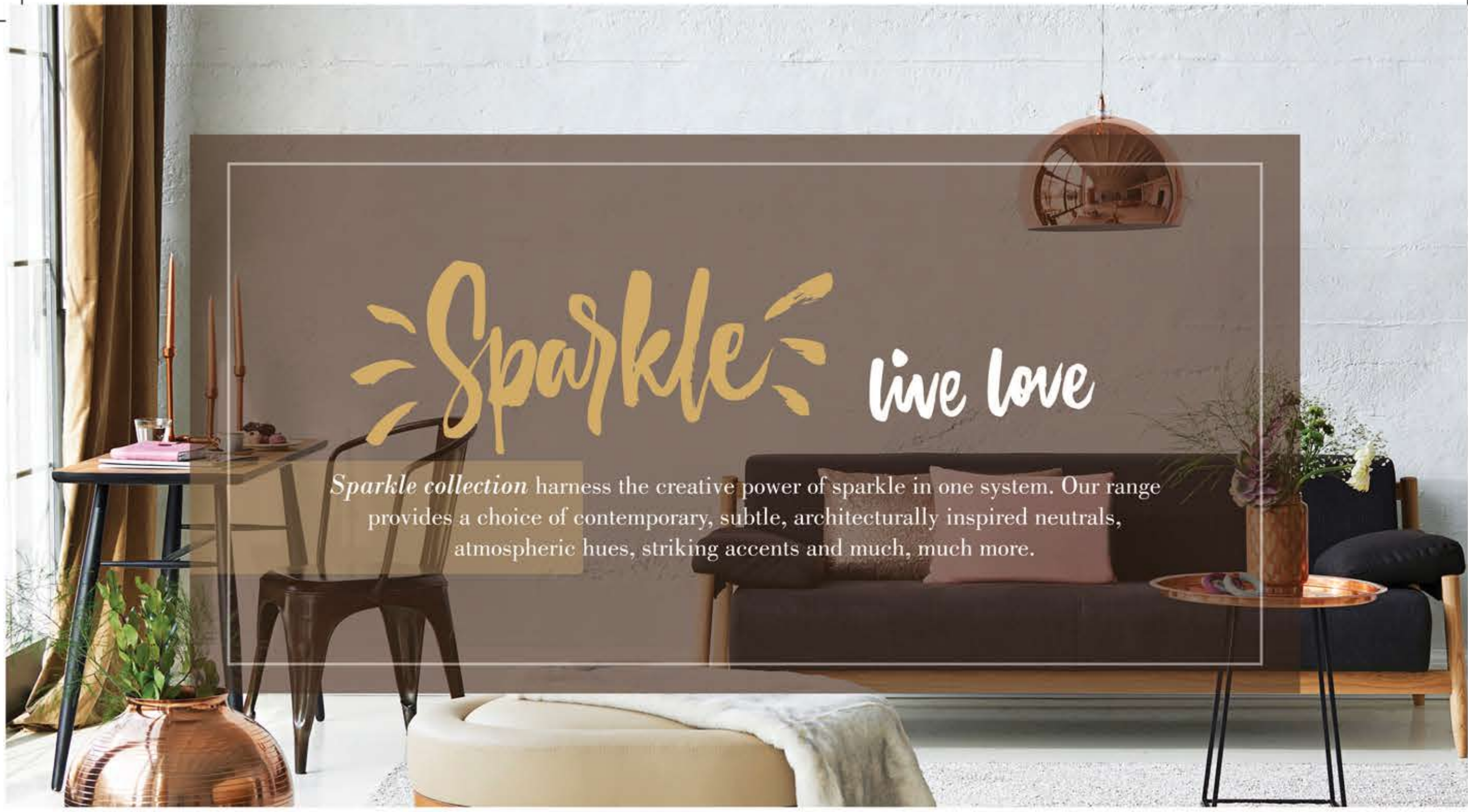
MD 325



MD 327



MD 326



Sparkle collection harness the creative power of sparkle in one system. Our range provides a choice of contemporary, subtle, architecturally inspired neutrals, atmospheric hues, striking accents and much, much more.

SPARKLE COLLECTION



MD 101



MD 104



MD 105



MD 106



MD 107



MD 108



MD 109



MD 111



MD 114



UPCOMING



MD 102



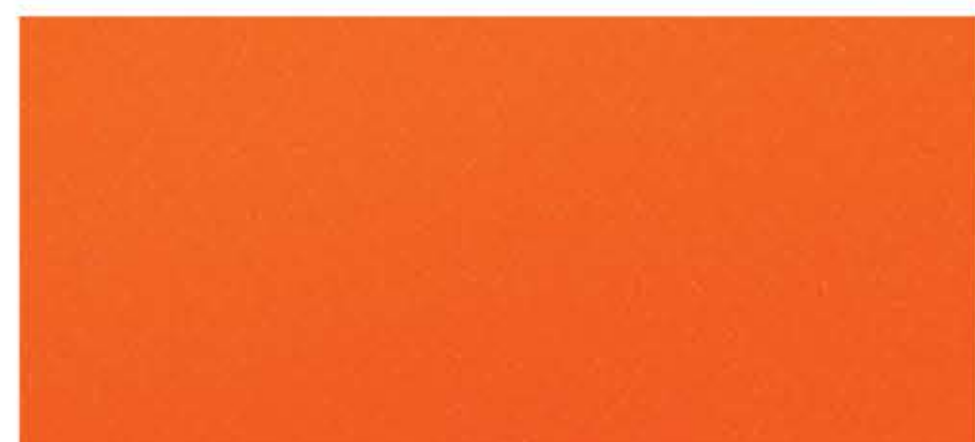
MD 103



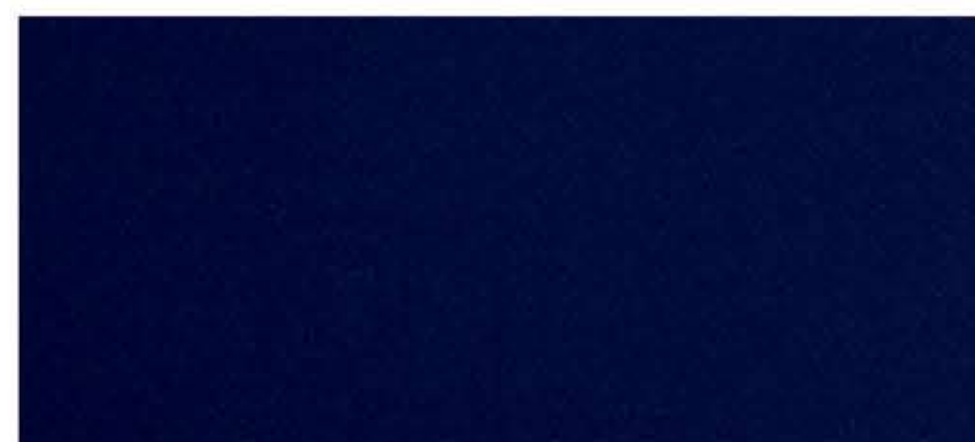
MD 115



MD 113



MD 112



MD 110



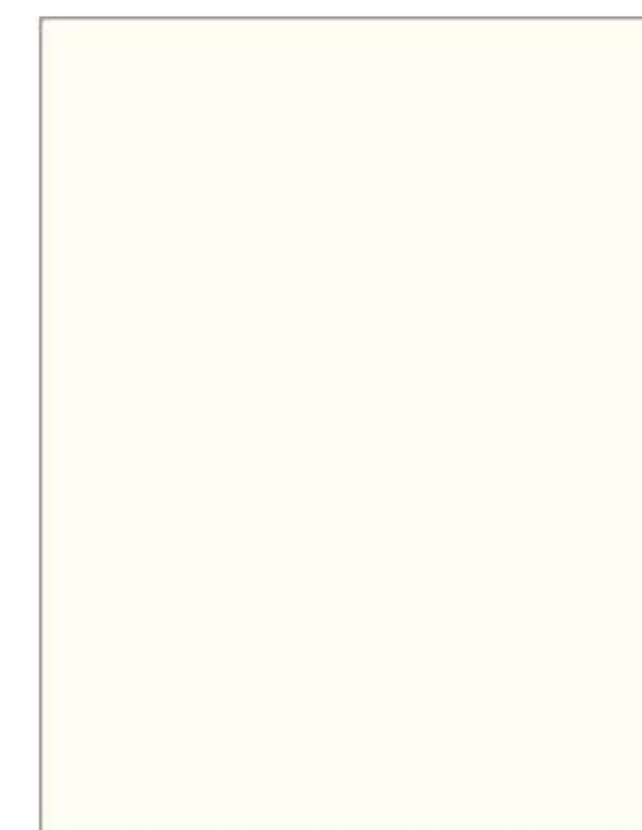
SOLID
HIGH GLOSS ● ● ●

PLAIN HIGH GLOSS

MISTIKA DECOR
Premium PVC Decorative Laminates



MD 116



MD 120



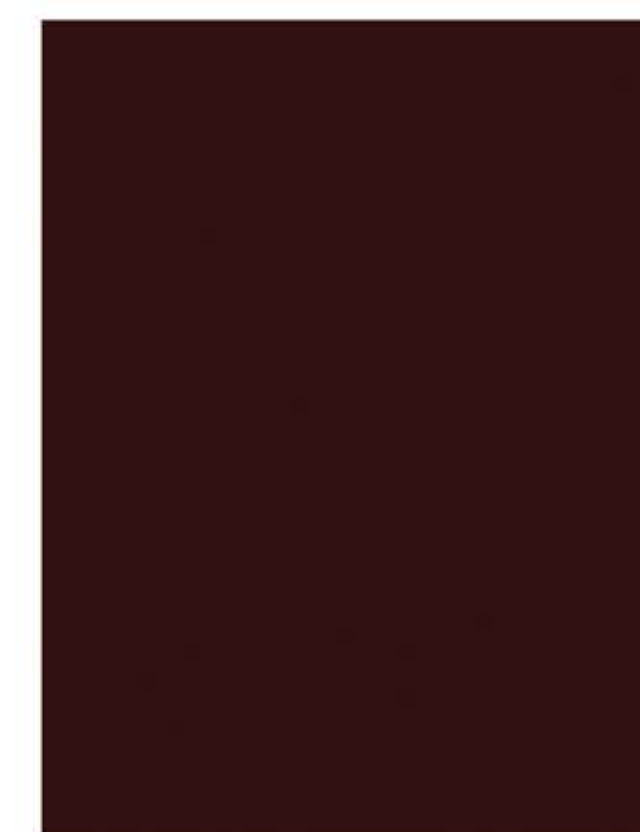
MD 121



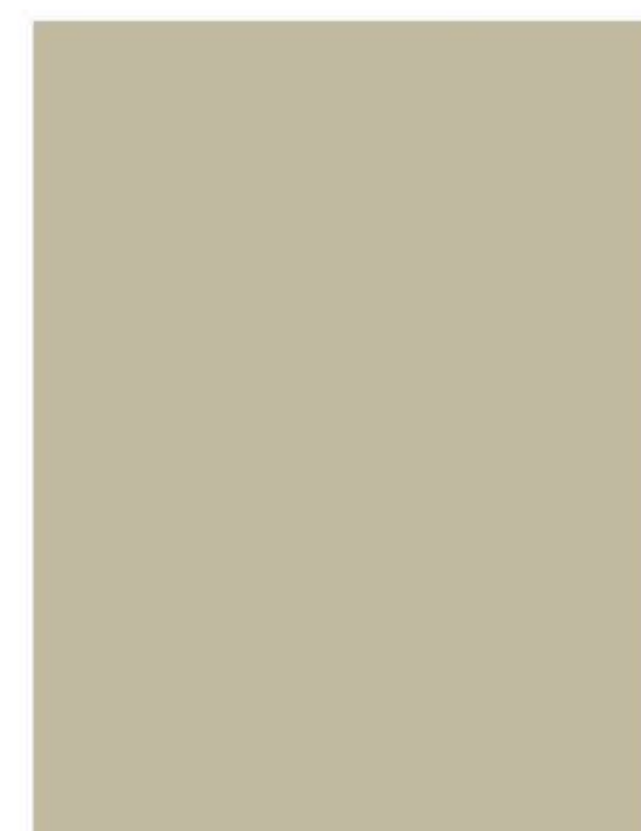
MD 122



MD 117



MD 119



MD 118



MD 123



INDEX

S. No.	Design No.	Page No.
01	MD 101	51
02	MD 102	50
03	MD 103	50
04	MD 104	51
05	MD 105	51
06	MD 106	51
07	MD 107	51
08	MD 108	51
09	MD 109	51
10	MD 110	50
11	MD 111	51
12	MD 112	50
13	MD 113	44
14	MD 113	50
15	MD 114	51
16	MD 115	45
17	MD 115	50
18	MD 116	53
19	MD 117	53
20	MD 118	53
21	MD 119	53
22	MD 120	53
23	MD 121	53
24	MD 122	53
25	MD 123	53
26	MD 301	34
27	MD 302	34
28	MD 303	37
29	MD 304	37
30	MD 305	38
31	MD 306	38
32	MD 307	39
33	MD 308	39
34	MD 309	40
35	MD 310	40
36	MD 311	40
37	MD 312	43
38	MD 313	43
39	MD 314	43
40	MD 315	47
41	MD 316	47
42	MD 317	42

S. No.	Design No.	Page No.
43	MD 318	42
44	MD 319	46
45	MD 320	46
46	MD 321	41
47	MD 322	41
48	MD 323	41
49	MD 324	49
50	MD 325	49
51	MD 326	49
52	MD 327	49
53	MD 328	48
54	MD 329	48
55	MD 330	45
56	MD 331	45
57	MD 332	44
58	MD 333	45
59	MD 334	44
60	MD 401	11
61	MD 402	10
62	MD 403	10
63	MD 404	14
64	MD 405	11
65	MD 406	11
66	MD 407	14
67	MD 408	10
68	MD 409	29
69	MD 410	28
70	MD 411	29
71	MD 412	28
72	MD 413	29
73	MD 414	28
74	MD 415	27
75	MD 416	27
76	MD 417	27
77	MD 418	31
78	MD 419	31
79	MD 420	30
80	MD 421	31
81	MD 422	30
82	MD 423	30
83	MD 424	36
84	MD 425	36

S. No.	Design No.	Page No.
85	MD 426	29
86	MD 427	28
87	MD 428	33
88	MD 429	33
89	MD 430	12
90	MD 431	13
91	MD 432	13
92	MD 604	16
93	MD 605	17
94	MD 606	17
95	MD 607	21
96	MD 608	21
97	MD 609	21
98	MD 610	21
99	MD 611	18
100	MD 612	18
101	MD 613	18
102	MD 614	19
103	MD 615	24
104	MD 616	24
105	MD 617	25
106	MD 618	25
107	MD 619	25
108	MD 620	25
109	MD 621	20
110	MD 622	20
111	MD 623	35
112	MD 624	35
113	MD 625	35
114	MD 626	35
115	MD 627	23
116	MD 628	23
117	MD 801	06
118	MD 802	07
119	MD 803	09
120	MD 804	09
121	MD 805	08
122	MD 806	08
123	MD 807	05
124	MD 808	05

SPECIFICATIONS

Thickness: 1.25mm (±10%)

Standard Size: 8'*4'

Range: PVC laminates come in a wide range of designs & colours.

Adhesive: PVC laminates are easy to apply with the standard laminating system, including most of the conventional water and solvent based adhesives normally used with plastic laminates. We do not recommend the use of heat activated adhesives.

Lamination: Proper substrates must be used and careful bonding procedures must be observed. Substrates should be of good quality plywood, high density particle board or high quality fiber board. The face of the substrate must be smooth and free of grease, wax, dust, chips and any other foreign matter. We DOT NOT recommend any kind of coat like PU base, melamine, lamination (wax) on our products.

Cutting & Machining: PVC laminates can be cut, routed and drilled with most standard wood working tools or equipments. All blades must be sharp. We recommend the use of Diamond Cutter Blade for cutting. To remove any burrs that may occur in the cutting process, we recommend the use of smooth file to feather all corner edges.

Bending and Forming: PVC laminates can be bend and all radius bending should be handled in the same manner as all grades of non post forming decorative laminates.

Kindly use V-Groove cutter to bend the sheets at 90 degree. For any difficulty please contact Mistika Decor.

Maintenance: Any cleaning agent containing acids, alkalis or abrasive should not be used to clean the laminate. Exposure to sunlight should be avoided.

Note: Mistika Decor warrants that all its products are free from manufacturing defects and perfectly fit for use in normal conditions. The sample swatches only represent the designs, colours and finish. They do not represent the actual thickness.

There may be batch to batch colour variation. We recommend doing proper inspection before cutting, altering or pasting the laminates. In case of any claim, the liability of the company's is however limited to the cost of the product only.

KINDLY REMOVE THE PROTECTIVE FILM WITHIN 7 DAYS OF INSTALLATION



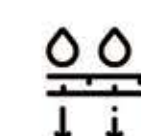
COLOUR CORE



90° BENDABLE



FIRE RETARDANT



WATER PROOF



GLOSSY SURFACE



TERMITE & PEST PROOF



LONG LASTING



CARPENTER FRIENDLY